

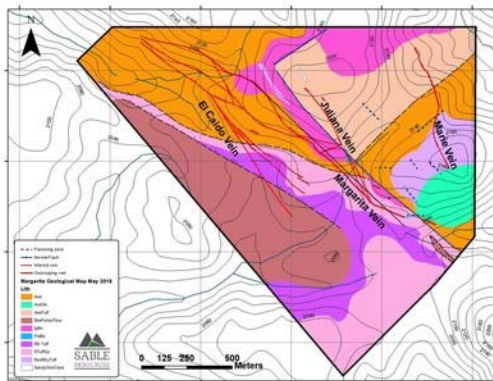


Sable Identifies 2 New Veins at Margarita Project

TORONTO, July 5, 2018 /CNW/ - Sable Resources Ltd ("**Sable**") (TSXV: SAE) is pleased to announce the identification of 2 new epithermal veins at the Margarita Project, Chihuahua State, Mexico.

Following ten days of detailed field mapping at 1:5000 scale, two additional mineralized structures The Juliana and Marie Veins, were identified within Sable resources mineral claims. The Juliana Vein can be traced for approximately 650m along a 040 strike. Previous grab sampling prior to mapping returned an assay value of 405 ppm Ag for the vein. The vein has been observed to dip approximately vertical and appears to merge with the Margarita structure to the southwest.

The Marie vein outcrops at the most eastern part of the Margarita property. The vein strikes 020 to 030 and was observed for 650m along strike from which 400m are within Sable's concessions. The width of the vein is variable with 1.6 m of quartz vein to >2m of breccia zone with several smaller braided veins. The Marie vein is observed dipping at high angles towards SW, NE and vertical, depending on the location. A large zone of kaolinite, silicification and Fe oxides characterizes the Marie vein after pyrite on its western side whereas the eastern side shows green argillic alteration (illite, smectite, and Fe oxides after sulfides).



Margarita Geological Map

In light of the discovery of the 2 new veins, Sable has re-assessed the drill program deciding to increase the first phase to a maximum of 5,000m and has changed drill companies to better accommodate the increased meterage.

ABOUT THE MARGARITA PROJECT

Acquired as part of Sable Resources Upper Level Epithermal Strategy, the Margarita Project is located in the *Satevó* Municipality in Chihuahua state, approximately 120km SW of the state capital of Chihuahua City, and 110km NNW of the historic *Parral* mining district. The Project lies on strike with Sunshine Silver Corp.'s Los Gatos Project, which hosts a Measured and Indicated 9.2 million ounce resource containing

178 million ounces silver-equivalent (Sunshine Silver Mining and Refining website published NI 43-101 report titled "Feasibility Study of the Cerro Los Gatos Silver-Lead-Zinc Deposit Los Gatos Project" January 2017). Hosted in Eocene-Oligocene Volcanics, Margarita is defined by 4 veins; Margarita, *El Caído*, Juliana and Maria on 2 claims totally encompassed by Sunshine Silver.

Neither TSX Venture Exchange nor its Regulation Services Provider (as that term is defined in policies of the TSX Venture Exchange) accepts responsibility for the adequacy or accuracy of this release.

SOURCE Sable Resources Ltd.

View original content with multimedia:

<http://www.newswire.ca/en/releases/archive/July2018/05/c2013.html>

%SEDAR: 00008665E

For further information: Tom Obradovich, President & CEO, tobradovich@sympatico.ca, Tel (416) 985-7140 Or visit <http://www.sableresources.com>

CO: Sable Resources Ltd.

CNW 08:00e 05-JUL-18