



GREENFIELDS EXPLORATION at its Best

CORPORATE PRESENTATION
June 2025

TSXV **SAE**



Forward Looking Statements

Certain statements in this presentation document are forward-looking statements, which reflect the expectations of management regarding the business development objectives and plans of Sable Resources Ltd. and its subsidiaries (collectively referred to as “Sable” or the “Company”). Forward-looking statements consist of statements that are not purely historical, including any statements regarding beliefs, plans, expectations or intentions regarding the future. Forward-looking statements in this presentation include statements regarding the company’s proposed targets for production and for other exploration and development plans; statements regarding exploration upside; statements regarding projected metallurgical recoveries; statements regarding plans for exploration and development; statements regarding expected costs; statements regarding the mill; and statements regarding objectives and targets. Such statements are subject to risks and uncertainties that may cause actual results, performance or developments to differ materially from those contained in the statements. No assurance can be given that any of the events anticipated by the forward-looking statements will occur or, if they do occur, what benefits the Company will obtain from them.

These forward-looking statements reflect management’s current views and are based on certain expectations, estimates and assumptions which may prove to be incorrect. A number of risks and uncertainties could cause the Company’s actual results to differ materially from those expressed or implied by the forward-looking statements, including: (1) a downturn in general economic conditions in North America and internationally, (2) the inherent uncertainties and speculative nature associated with gold and silver exploration, (3) a decreased demand for gold and silver, (4) any number of events or causes which may delay exploration and development of the Company’s property interests, such as environmental liabilities, weather, mechanical failures, safety concerns and labour problems, (5) the risk that the Company does not execute its business plan, (6) inability to finance operations and growth, (7) inability to obtain all necessary permitting and financing, and (8) other factors beyond the Company’s control. These forward-looking statements are made as of the date of this presentation and the Company assumes no obligation to update these forward-looking statements, or to update the reasons why actual results differed from those projected in the forward-looking statements, except in accordance with applicable securities laws. Additional information about the Company and these and other assumptions, risks and uncertainties is available in the Company’s public filings with Canadian securities regulators, available on SEDAR+ at www.sedarplus.ca. Any Resources, Reserves or other estimates as to the volume of mineralized rock contained herein are historical estimates and were completed prior to the implementation of NI 43-101 unless expressly stated. Sufficient work to classify the historic mineral resource as a current mineral resource has not been completed. Hence, the resource estimate should not be relied upon.

SABLE RESOURCES – Greenfields Exploration at its Best



CLEAR OBJECTIVE

To discover exceptional high value mineral deposits that can generate significant shareholder return



SHARP FOCUS

Under-explored Gold-Copper-Moly multi-million tonne porphyry systems and associated epithermal gold deposits with good potential for camp-size discoveries



WELL-FUNDED

~C\$12.5M cash at the end of May 2025. Additional C\$5M milestone payment dependant on positive drilling results at the Baker-Shasta property related to the 1% NSR's on the property sold to Osisko Gold Royalties.



STRONG MANAGEMENT TEAM

Executive and management team with strong discovery and business track record: 59 Million Oz gold in the Americas, and participation in the concept development leading to the discovery of >1 Billion T Cu porphyry deposit



PRO-MINING JURISDICTIONS

All projects located in well-endowed, pro-mining jurisdictions, including San Juan, Argentina, and British Columbia, Canada



WORLD CLASS POTENTIAL

Large mineral tenure land packages allow for integrated belt-scale exploration and systematic unlocking of world-class potential



EXPERT LOCAL EXPLORATION TEAMS

Technically-driven, experienced and well-trained, country-based exploration teams with local, hands-on knowledge and skills

Sable Leadership – Board & Management

Ruben Padilla – President, CEO, Director

- Ph.D. University of Arizona (La Escondida Cu deposit, Chile)
- +35 years experience in mineral exploration
- 13 years with BHP and seven years with Anglo Gold Ashanti
- > 12 years as an independent consultant
- Member of exploration teams that discovered 47 M ounces of gold; participation in the concept development leading to the discovery of the La Escondida East Cu deposit, Chile

Kelso Cartwright – CFO

- Chartered Professional Accountant, with 12+ years of professional experience, primarily in the mining industry.
- Former Corporate Controller for JDS Silver Inc., a company that was sold to Coeur Mining for US\$250 million

Luis Arteaga – Vice President, Exploration

- M.Sc. Laurentian University
- Professional Geoscientist (P.Geo - Ontario)
- 20 years of exploration experience
- Global experience in numerous geological domains and deposits types

Robert Shaw – Director, Chairman

- +35 years mineral exploration throughout the Americas
- Founder and senior executive of listed gold companies
- Instrumental in the discovery of Gramalote, La Colosa and La Quebradona +40 million ounces of gold
- Master of Science, Economic Geology, University of Alberta

Mary Little – Director

- +25 years experience in the mining industry and exploration geology, including 15 years based in Latin America
- Founding CEO, Mirasol Resources Ltd. and senior positions with Cyprus Amax, Echo Bay, Newmont and WMC Ltd.
- Director of TSXV and NYSE listed companies
- Masters in Earth Sciences, University of California and MBA, University of Colorado

Francisco “Barry” Quiroz – Director

- Osisko Gold Royalties nominee
- +30 years of experience in mineral exploration
- M.Sc., Exploration Geology, University of Arizona
- Current President, Minera Sapuchi – Osisko Development, Mexico

Andrés Pérez – Director

- +18 years of experience as a lawyer specializing in mining law in Mexico
- Founder partner and Chairman, Molina, Hanff & Pérez-Howlet, SC, a law firm specializing in mining law since 2006
- Masters degree in Public Administration and public Policies, Monterrey Institute of Technology, Masters in Administration, University of Chihuahua and Law Degree, University of Chihuahua, Mexico

OVERVIEW

Share Structure and Capitalization

Capital Structure (C\$M Except Per Share Figures)

Current Price (as of May 30, 2025)	C\$0.04
52-Week High	C\$0.06
52-Week Low	C\$0.025
Shares Outstanding	287,988,230
Market Capitalization	C\$11.5M

Capital Structure (C\$M Except Per Share Figures)

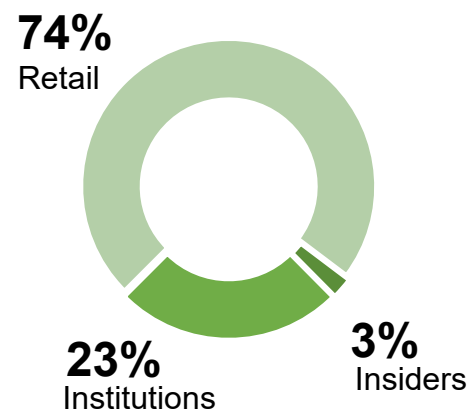
Warrants and options	Amount
Options	19,880,000
RSUs	866,668
Warrants	Nil
Total	20,746,668
(Add) Basic Shares Outstanding	287,998,230
Fully Diluted Shares Outstanding	308,744,898

Treasury: ~C\$12.5 M cash (May 30, 2025)

British Columbia Royalty Milestone Payment:

- C\$5M milestone payment dependant on positive drilling results at the Baker-Shasta property related to the 1% NSR's on the property sold to Osisko Gold Royalties.

Share Structure



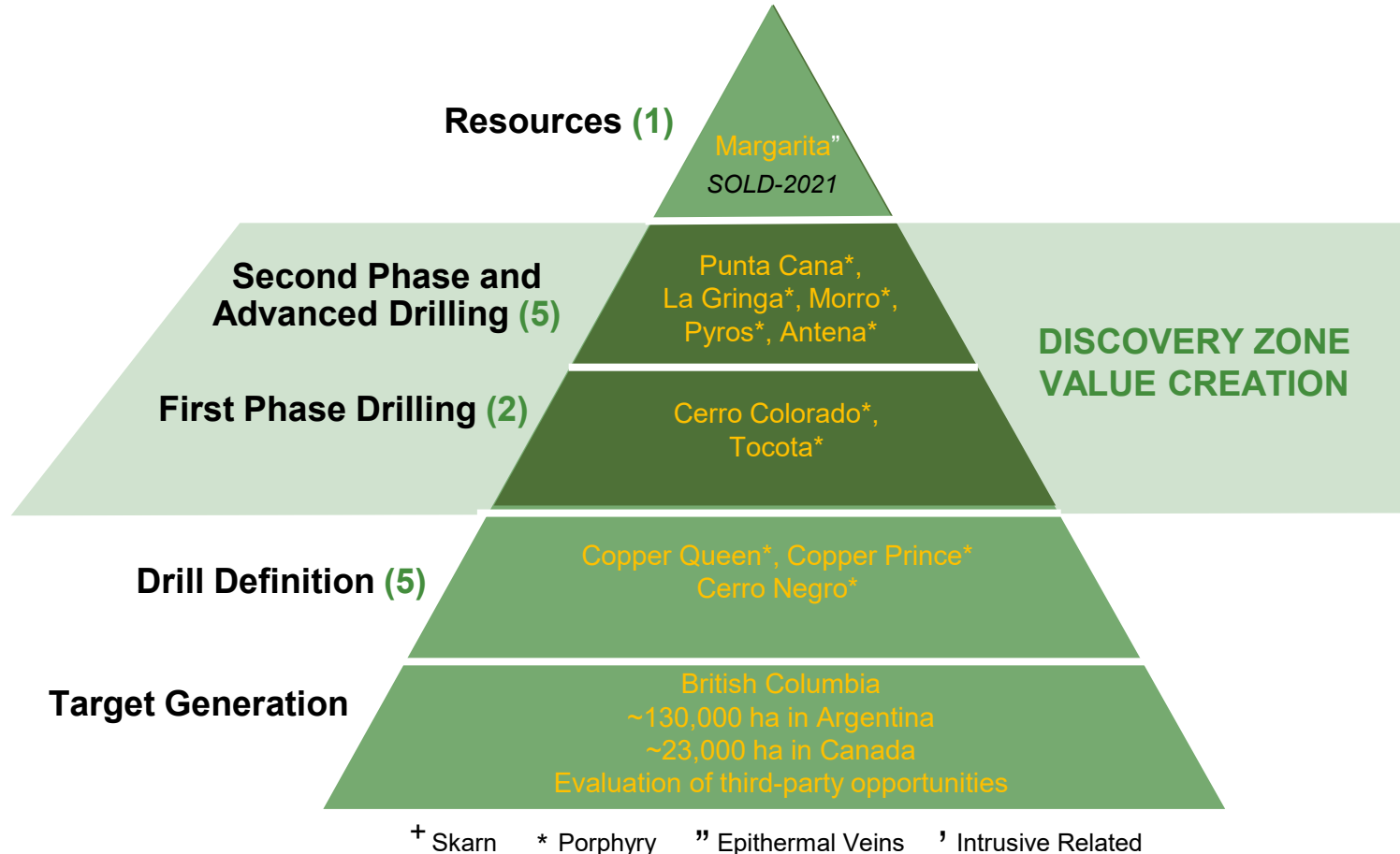
Top Institutional Shareholders

Osisko Gold Royalties	9.85%
Merk Financial	7.65%
Franklin Templeton	5.6%

Senior Company-Style Exploration

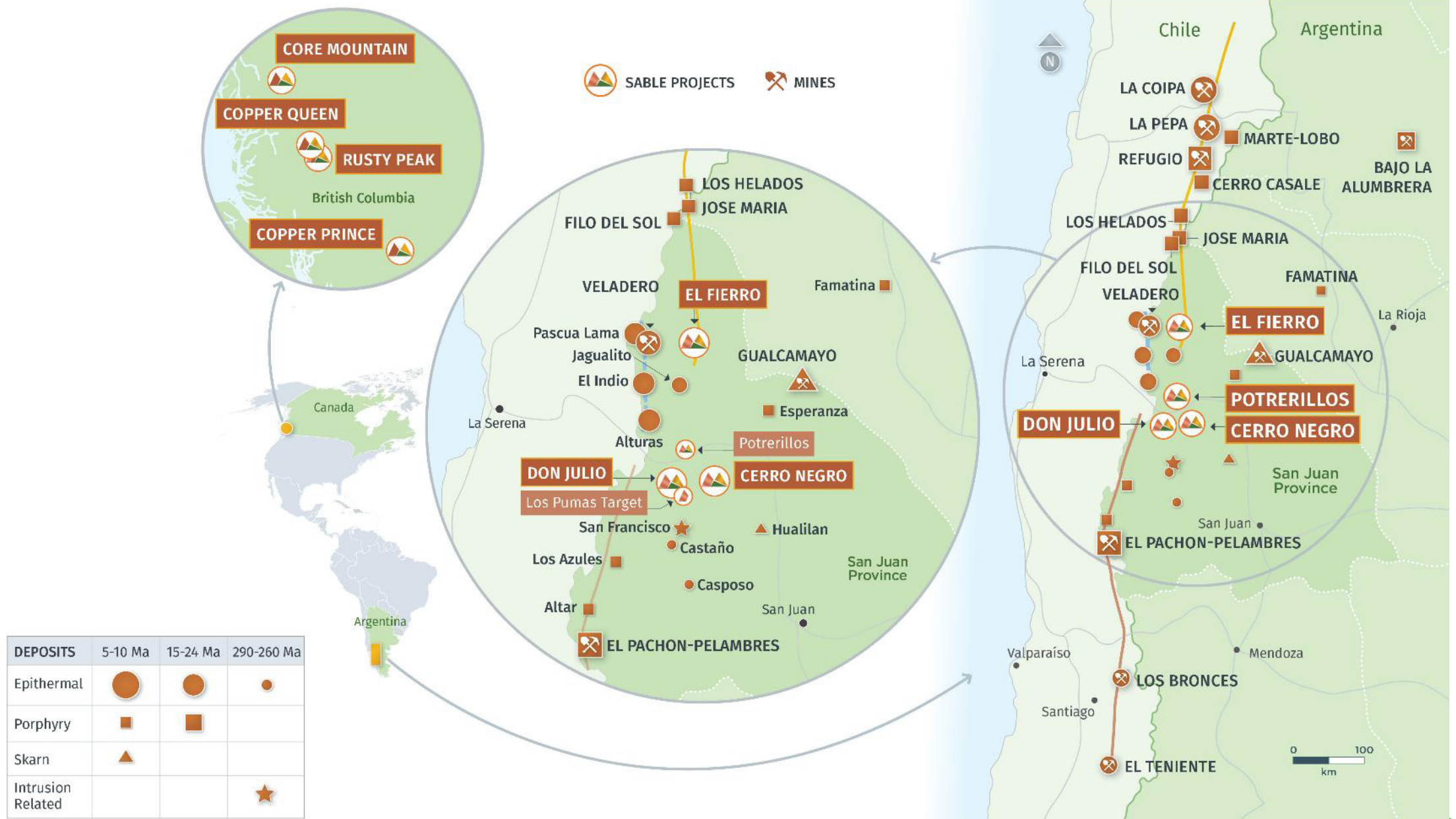
SABLE RESOURCES – Greenfields Exploration at its Best

Exploration Pipeline (June 2025 Status)



- **Focus *Only* on Tier 1-Potential Mineral Systems**
(Cu-Au-Mo porphyries and Au-Ag Epithermal systems)
- Proven Systematic Discovery Methodology
- Increased Probability of Discovery through High-Quality Project Pipeline
- Focus in Well-Endowed, Pro-Mining Jurisdictions
- Tight-knit, Experienced, Knowledgeable Team
- **Well Financed to Keep Drilling and Generating**

Exploring in Two Well-Endowed Porphyry Regions of the Americas – Argentina and Canada



Sable's Presence in San Juan

>130,000 ha in three project areas:

El Fierro (75,000 ha) Partnered with Moxico Resources

- Old mining district never explored in modern times
- Four seasons of work by Sable
- Discovery of the large Cu-Au-Mo Miocene Pyros porphyry system
- Additional drilling required to define high-grade Cu zones at Pyros and to test the Cu, Ag, Au Antena target

Cerro Negro (21,700 ha) Partnered with Moxico Resources

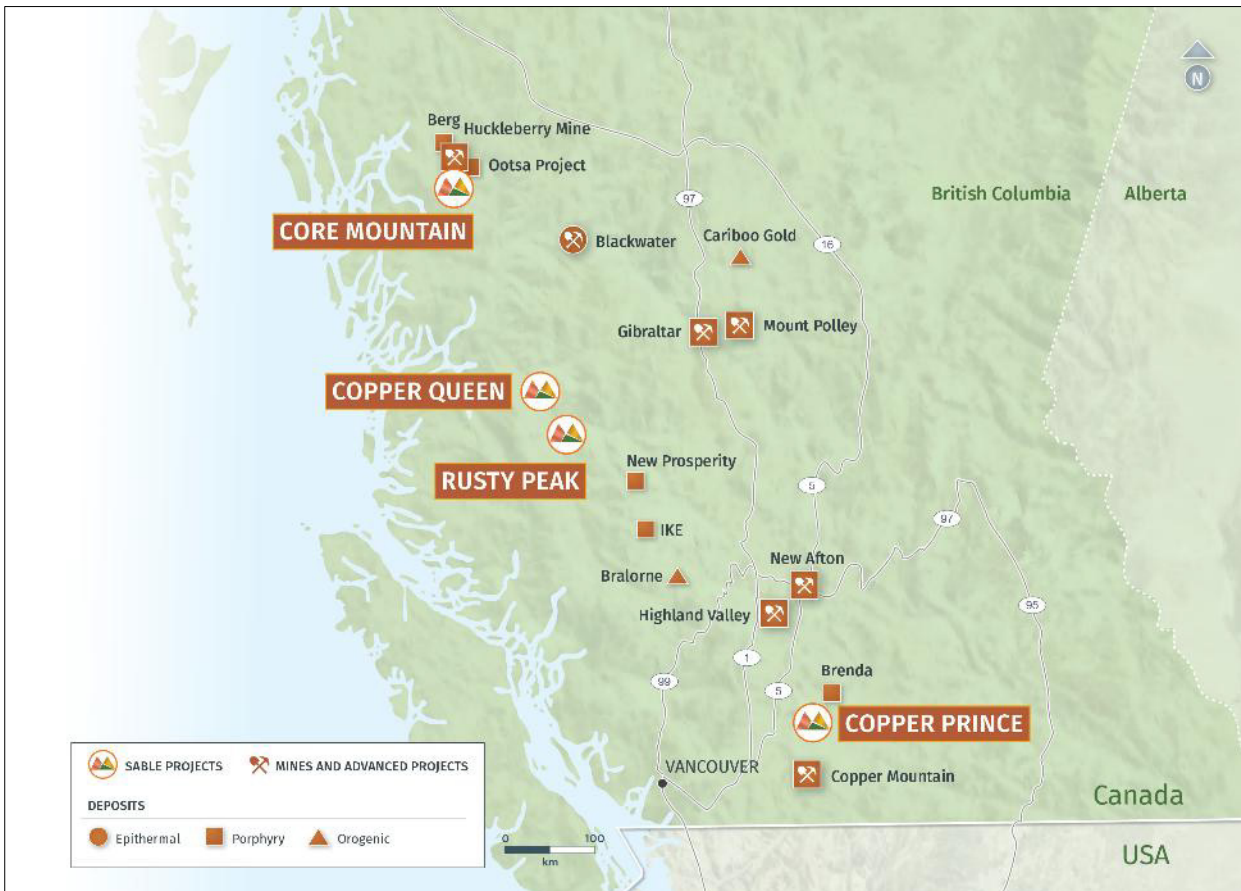
- Includes the Cerro Negro and Potrerillos properties
- Au-Cu-Mo porphyry target
- Conceptual target, concealed mineralization under Quaternary gravels
- Magnetic and IP anomaly, Miocene intrusions, Cu-Au-Mo-Ag anomalies in rocks and soils, favorable alteration in nearby rocks
- Never explored or drilled before

Don Julio (69,000 ha)

- 5 Au-Cu-Mo porphyry targets
- 4th field season in partnership with South32. Two drilling campaigns
- District exploration to define additional drill targets
- Includes Los Pumas Project outside Don Julio Cluster



Sable's Presence in BC



British Columbia, Canada

~23,000 ha along sub explored porphyry belts:

Copper Queen (15,133 ha)

- Explored by Anaconda between 1968 and 1969
- At least four Cu mineralized breccias
- Intensely explored by Sable in summer 2024
- Five exploration targets
- Breccias 1-2-3 drill ready

Copper Prince (3,980 ha)

- 25km from Copper Mountain Mine and 40km from historic Brenda mine
- Large sericitic alteration zone
- Magnetic and gravity anomalies
- Large and consistent Cu-Mo-Ag anomalies in 2024 soil sampling

Core Mountain (1,925 ha)

- 25km south of the past producing Huckleberry mine
- 23 and 39km from the Ootsa and Berg deposits (>2.1B tonnes resources*)
- Multiple Cu showings
- No exploration since 1986
- Initial prospection by Sable returned values up to 2.6% Cu

Why Argentina?

RioTinto

U\$ 2.5B Extension of Rincon Lithium Mine

BHP & lundin mining

BHP and Lundin Mining Jointly Acquire
Filo Mining for C\$ 4.1B

BHP Acquires 50% of the
Josemaría Project for U\$ 690M

RioTinto

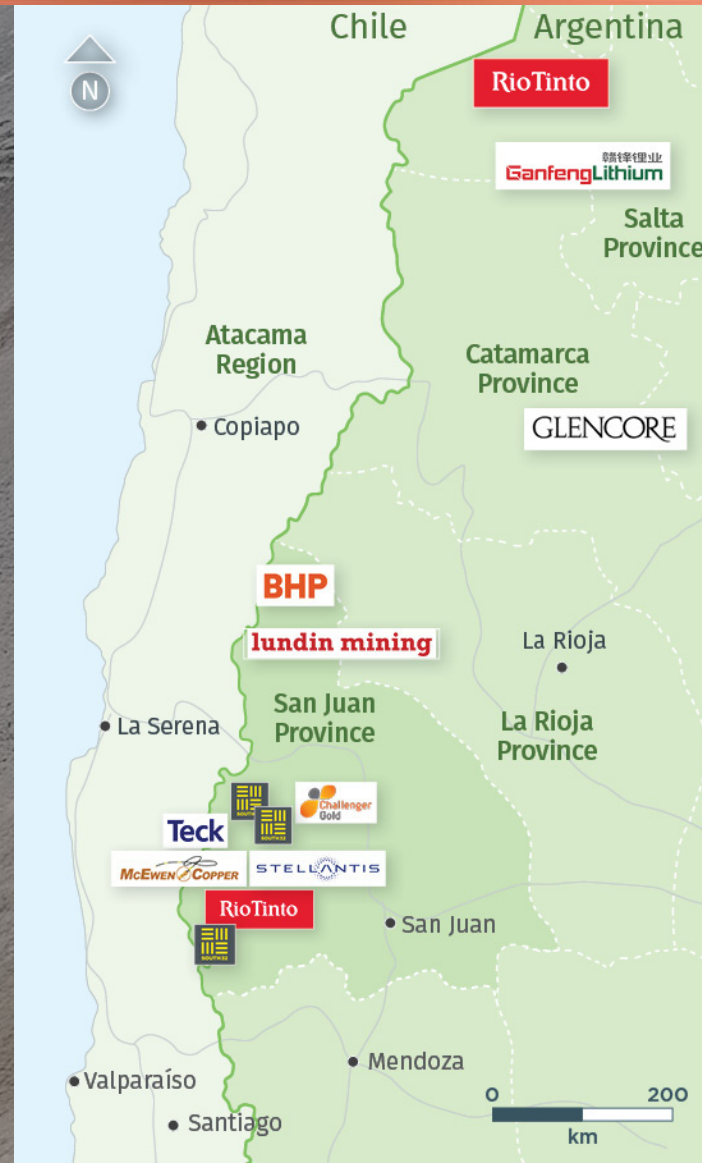
RioTinto Acquires 14.2%
of McEwen Copper for U\$ 65M



McEwen Secures Construction and
Operation Permit for Los Azules
Copper Mine

Teck

Teck Invests up to U\$ 29M in
AbraSilver's La Coipita Project



Acquisition of Lithea Inc
by Ganfeng U\$ 962M

GLENCORE

Glencore Acquires PanAmerican Silver
Stake in MARA Project for U\$ 475M



Stellantis Acquires 19.9% of
McEwen Copper for AR\$ 72B



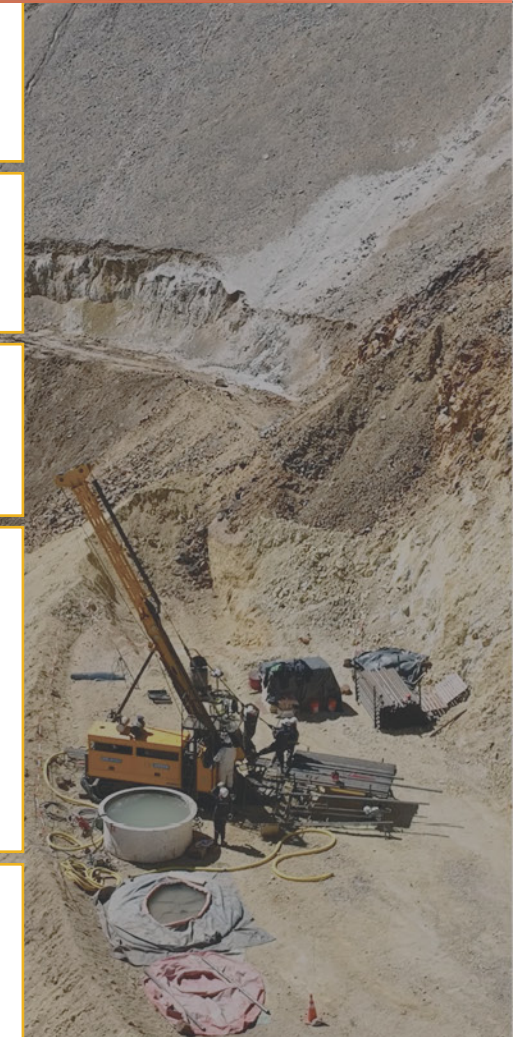
Has Invested more than U\$ 10M in
Sable's Don Julio Project

Has Invested up to U\$ 16M
in MinSud's Chita Valley Project

Acquires 14.8% of Aldebaran's
Resources for U\$ 21.8M



Challenger Receives Construction
Permit for the Hualilan Gold Project



Why San Juan?

LUNDIN MINING – BHP | VICUNA

BHP and Lundin Mining consolidated the Filo and Jose Maria deposits into the New Vicuna company in a U\$4.6B transaction

ABRASILVER RESOURCE | LA COIPITA

621 m @ 0.38% Cu. April 24, 2025, PR (1)

Teck Resources investing up to U\$ 29M for 80% of the project

MCEWEN COPPER | LOS AZULES

Indicated Resources: 10.9B lbs Cu
Inferred Resources: 26.7B lbs Cu (2)

14.5% owned by RioTinto. U\$65M Investment
19.4% owned by Stellantis. U\$275M Investment

Construction and Operation Permit has been recently granted

PAMPA METALS | PIUQUENES

558.2 m @ 0.73% CuEq, Including
130 m @ 1.31 % CuEq

Dec 5, 2023 PR (3)

ALDEBARAN RESOURCES | ALTAR

M&I: 2.4B tonnes @ 0.42% Cu
Inferred: 1.22B tonnes @ 0.37% Cu (4)

14.8% owned by South32

Recent Agreement with Nuton LLC, a RioTinto Venture



NGEX | LOS HELADOS

Indicated Resources: 18.4B lbs Cu,
10.2Moz Au, 97.5Moz Ag (5)

NGEX | LUNAHUASI DISCOVERY

1,619.4m at 0.87% CuEq including 876.4m at 1.13% CuEq

May 21, 2025 PR (6)

MINAS ARGENTINAS | GUALCAMAYO

Announced U\$ 1B investment to fund exploration and restart production of the Deep Carbonates deposit

SOUTH32 & MINSUD | CHITA

Released a mineral resource for the Chinchillones deposit consisting of

188M Tonnes @ 0.41% CuEq Ind
573M Tonnes @ 0.36% CuEq Inf (7)

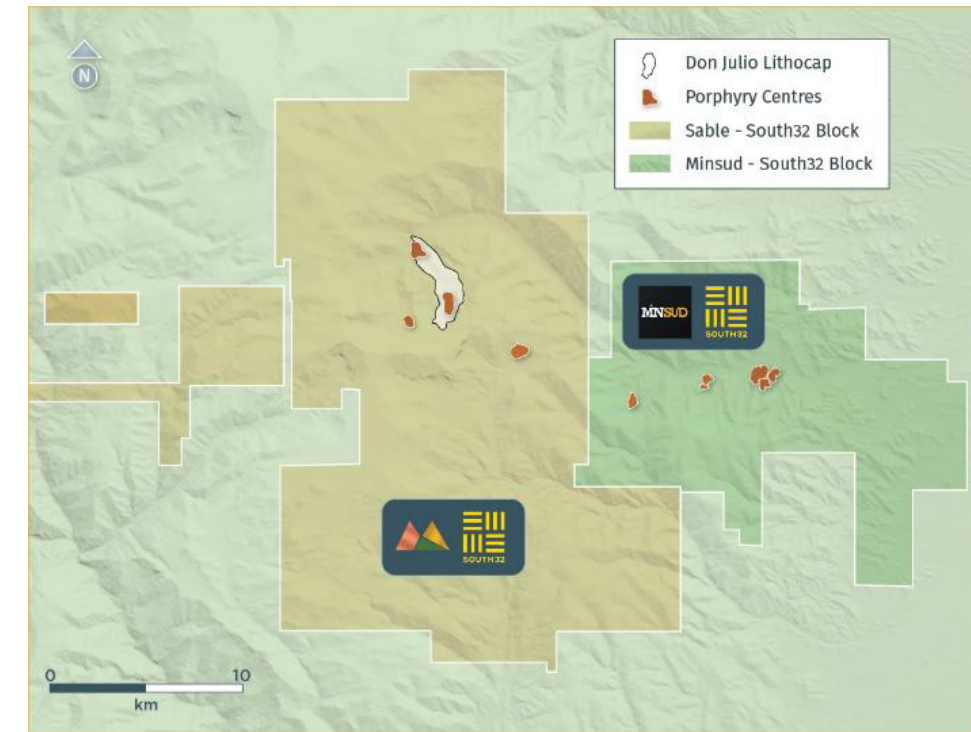
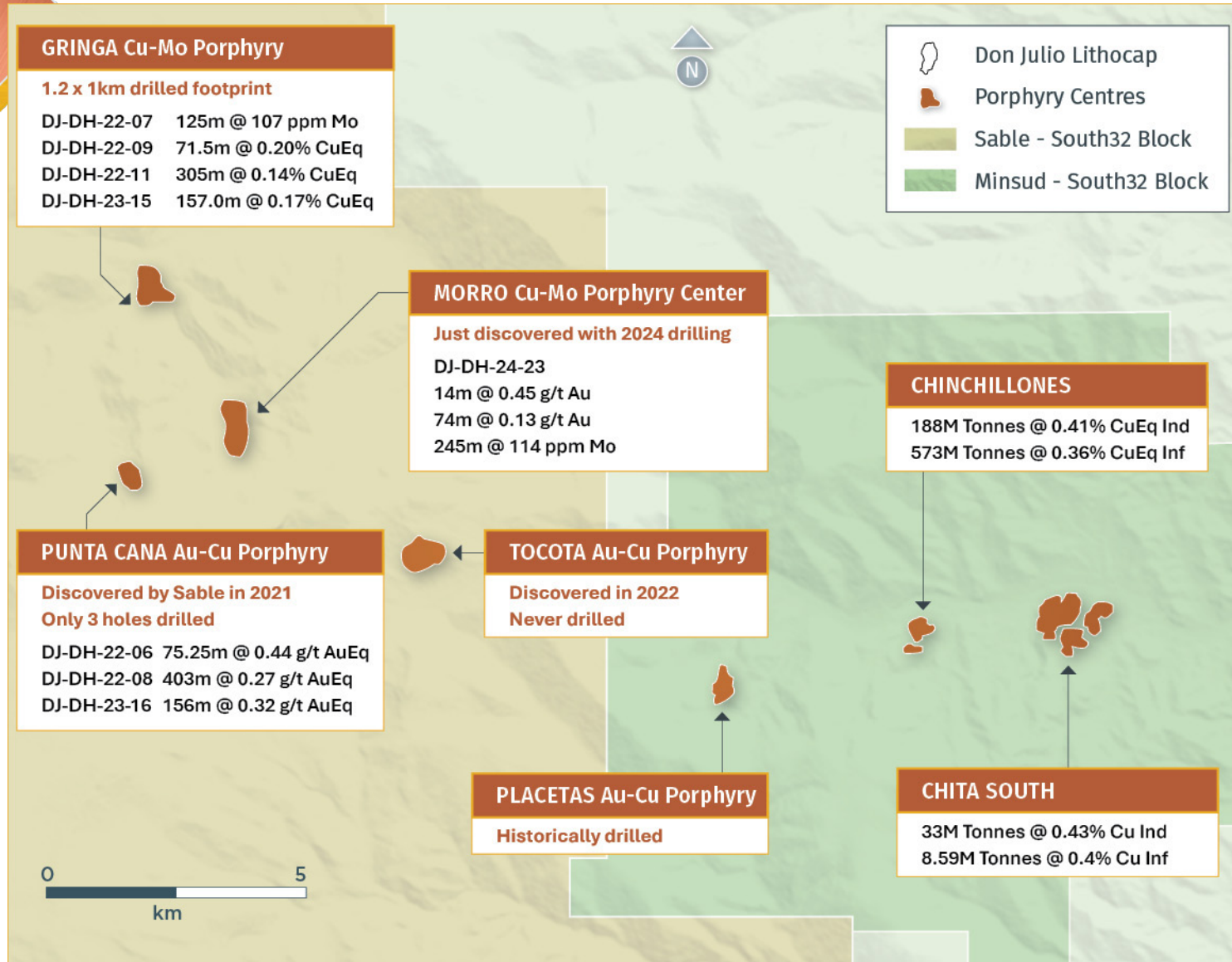
CHALLENGER GOLD | HUALILAN

Mineral Resource Estimate ("MRE") total of 60.6M Tonnes @ 1.4 g/t AuEq for 2.8 million ounces (AuEq) (8)

Challenger received construction and operation permits and will start production soon processing ore at the Casposo mine

- Notes:
- <https://www.abrasilver.com/news-releases/abrasilver-announces-new-copper-discovery-at-la-coipita-project-621-metres-grading-038-copper-including-114-metres-grading-070-copper>
 - <https://www.mcewenmining.com/operations/los-azules/default.aspx>
 - <https://www.pampametals.com/news/2023/pampa-metals-reports-130m-from-362m-1-31-cueq-within-a-broader-interval-of-558m-from-362m-0-73-cueq-which-remains-open-at-depthdecember-5-2023-15-14-12.html>
 - <https://aldebaranresources.com/projects/altar-copper-gold/overview/>
 - <https://ngexminerals.com/projects/vicuna-district/los-helados/mineral-resources/>
 - <https://ngexminerals.com/news/ngex-discovers-major-copper-gold-porphyry-system-a-122781/>
 - <https://minsud.com/our-project/>
 - <https://challengergold.com/projects/argentina/hualilan-resource-table/>

Don Julio – Chita Valley - Emerging District

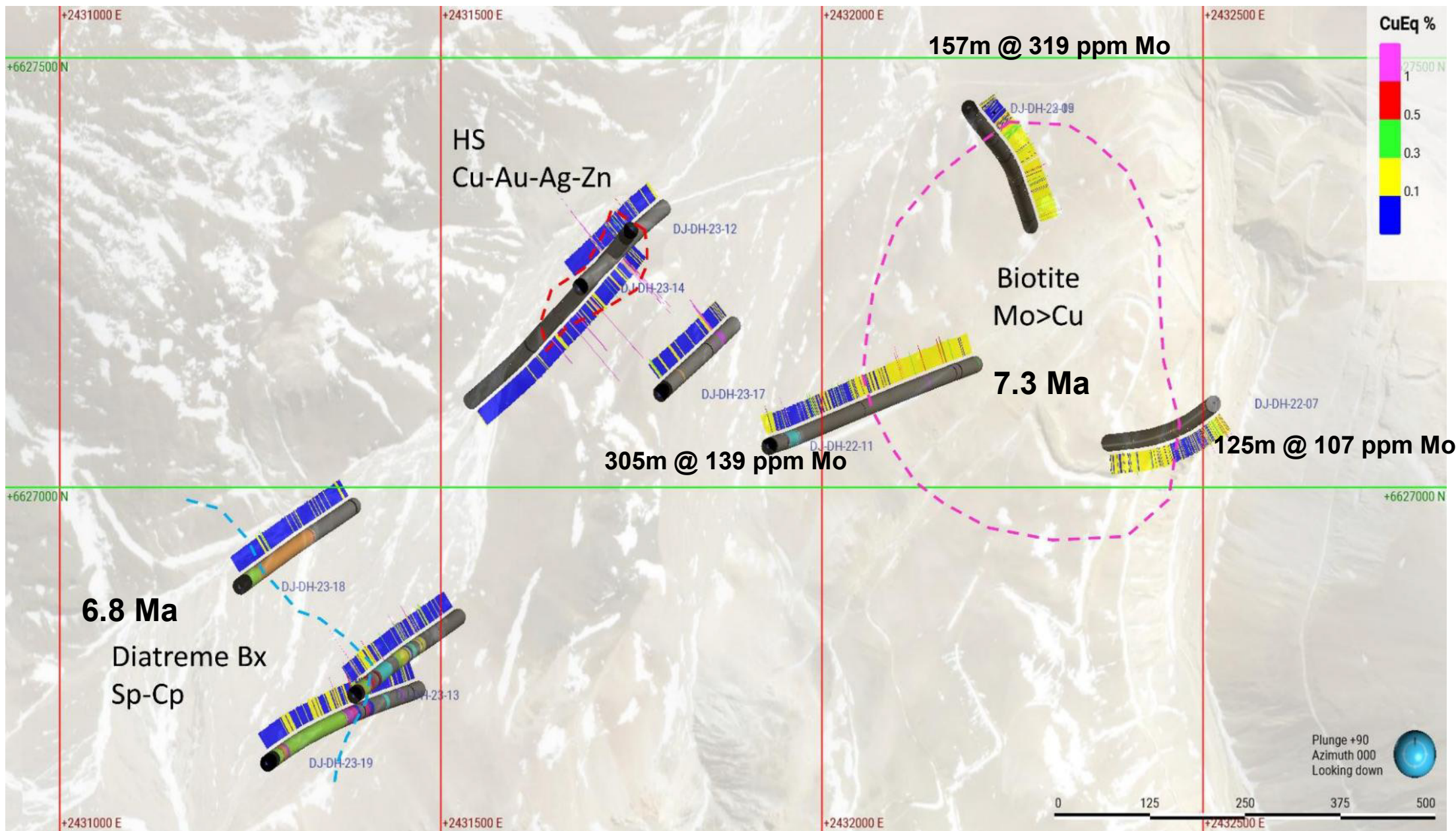


- The Don Julio - Chita valley area is emerging as a new porphyry district in San Juan fueled by intense exploration by Sable Resources and Minsud
- Minsud and South32 have recently released a large volume polymetallic resource for their Chinchillones target (<https://minsud.com/our-project/>)
- Sable on its side has discovered four Miocene porphyry centres, some of which have been initially tested. **None of these porphyries were historically known and were discovered by Sable in the last few years**

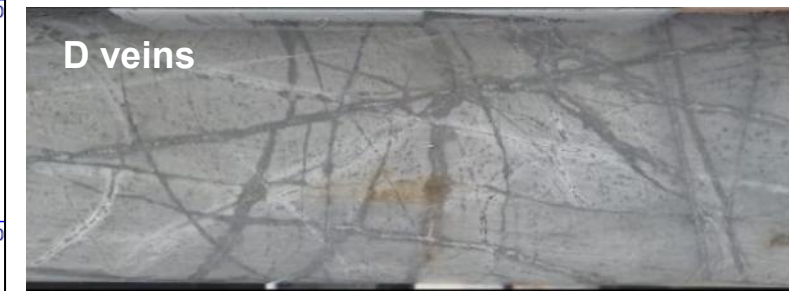
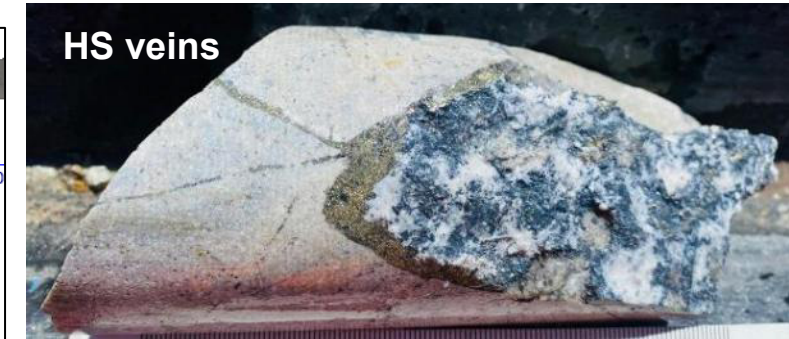
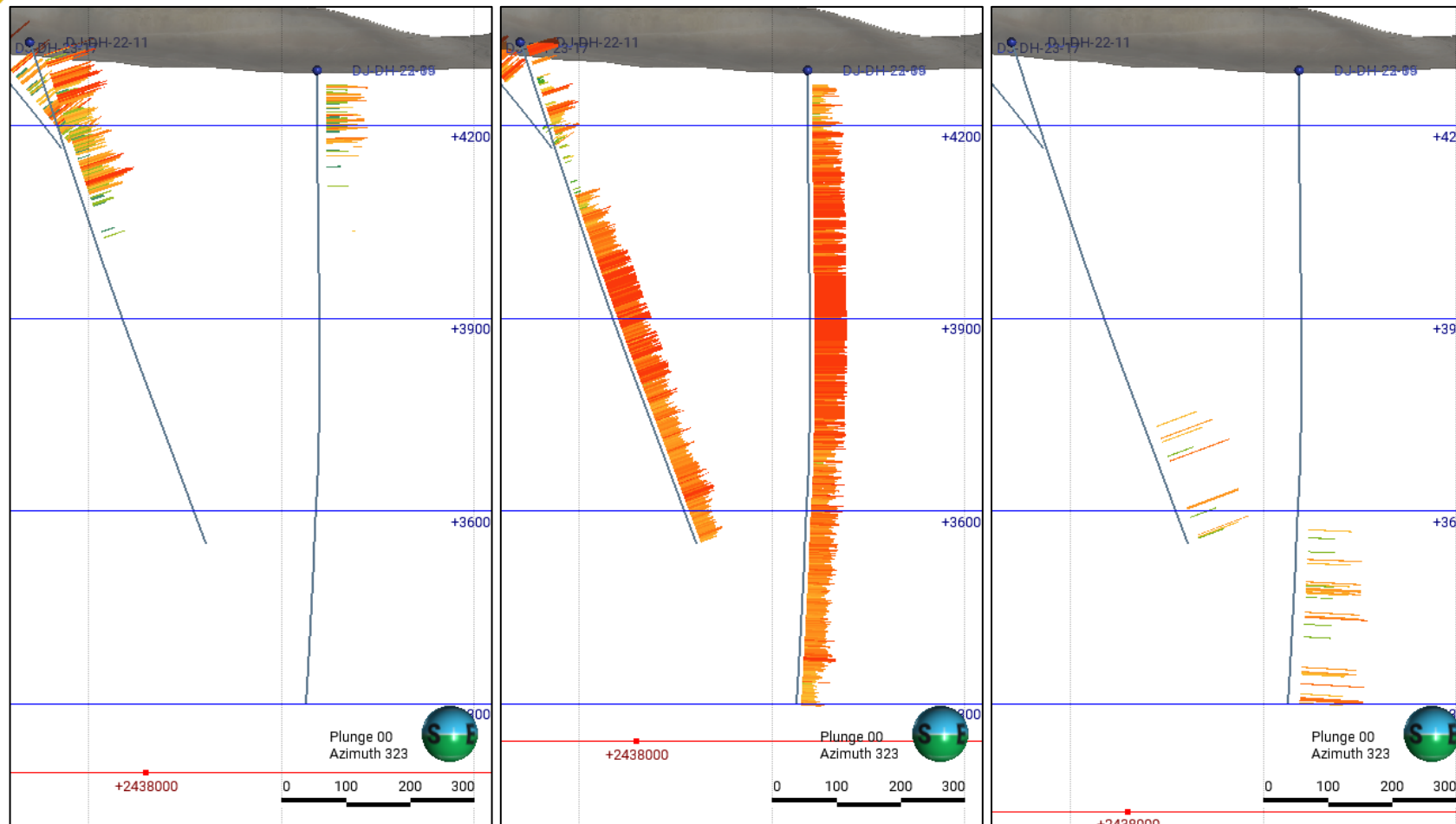
Details on Sable intercepts:

Sable PR Sept 6, 2022. <https://wp-sableresources-2023.s3.ca-central-1.amazonaws.com/media/2023/03/SAE-Press-Release-Sep06-22-Don-Julio-Drill-Results.pdf>
Sable PR March 7, 2023. <https://sableresources.com/sable-intercepts-2-21-cueq-over-11-1m-and-1-3-cueq-over-13-7m-at-la-gringa-target-within-the-don-julio-project/>
Sable PR April 26, 2023. <https://sableresources.com/sable-provides-update-on-ongoing-don-julio-drill-program-2/>

Don Julio Porphyry Centres – La Gringa

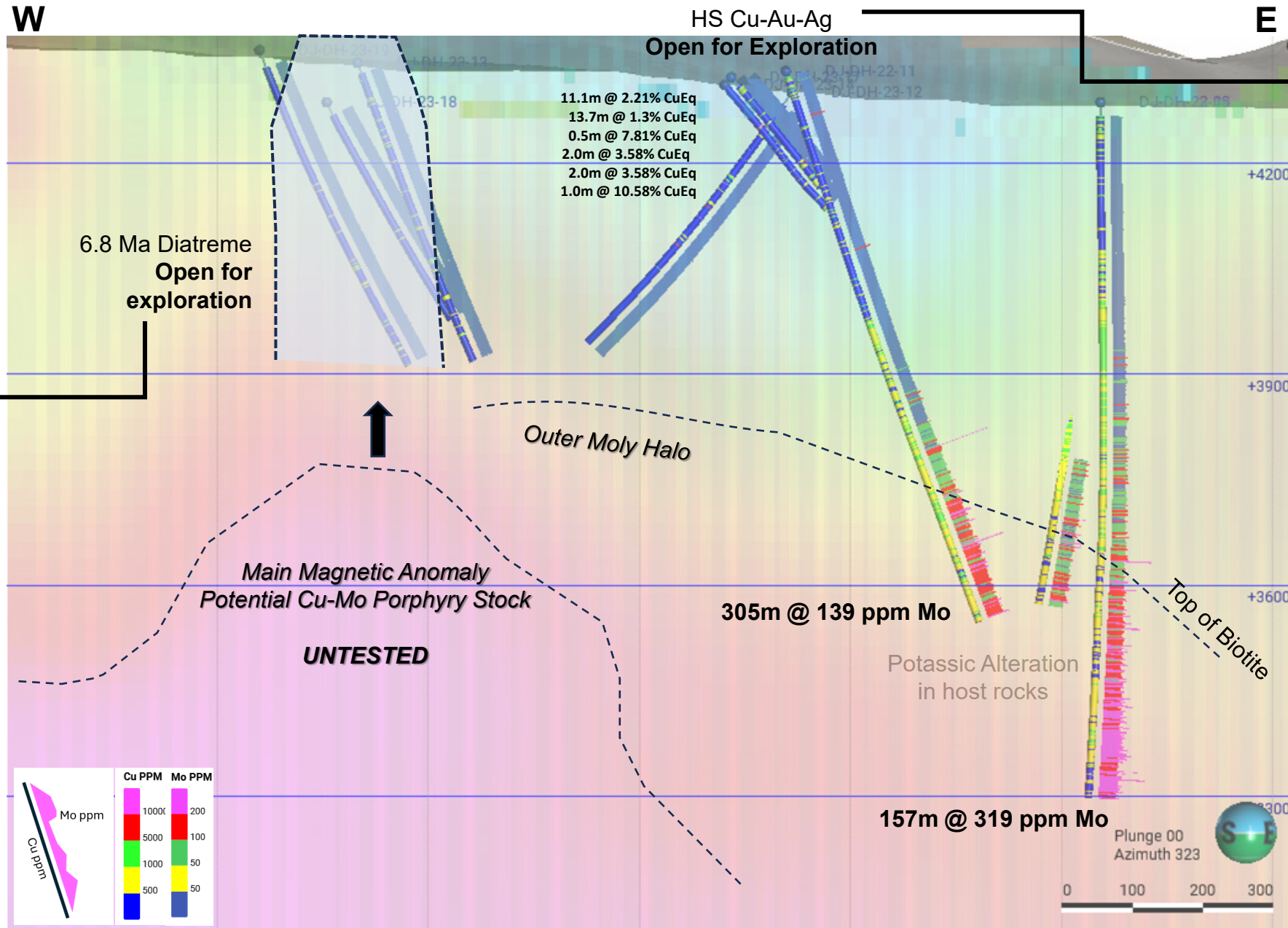


La Gringa – Transition from Adv Arg to Potassic Indicative of Preservation of the Porphyry System



Still in host rocks – The causative porphyry and potential ore zone have not been identified yet

La Gringa – Fully Preserved Porphyry System

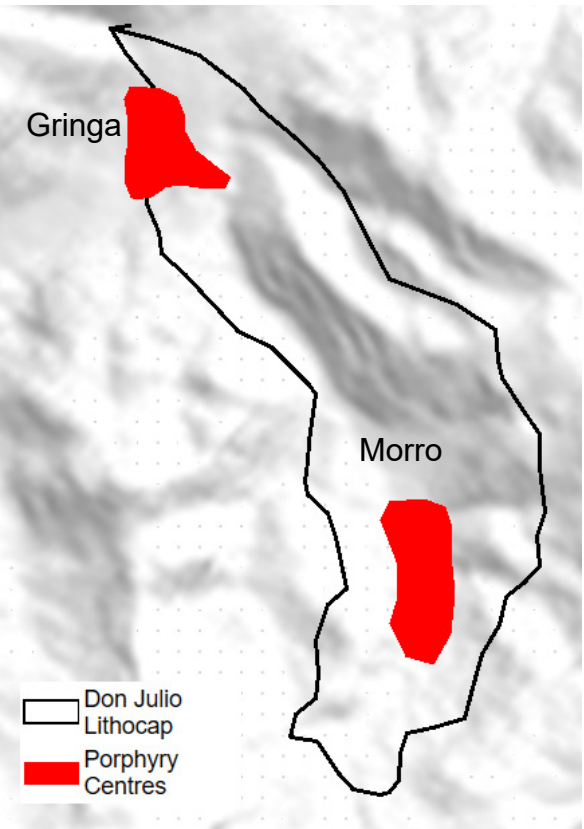
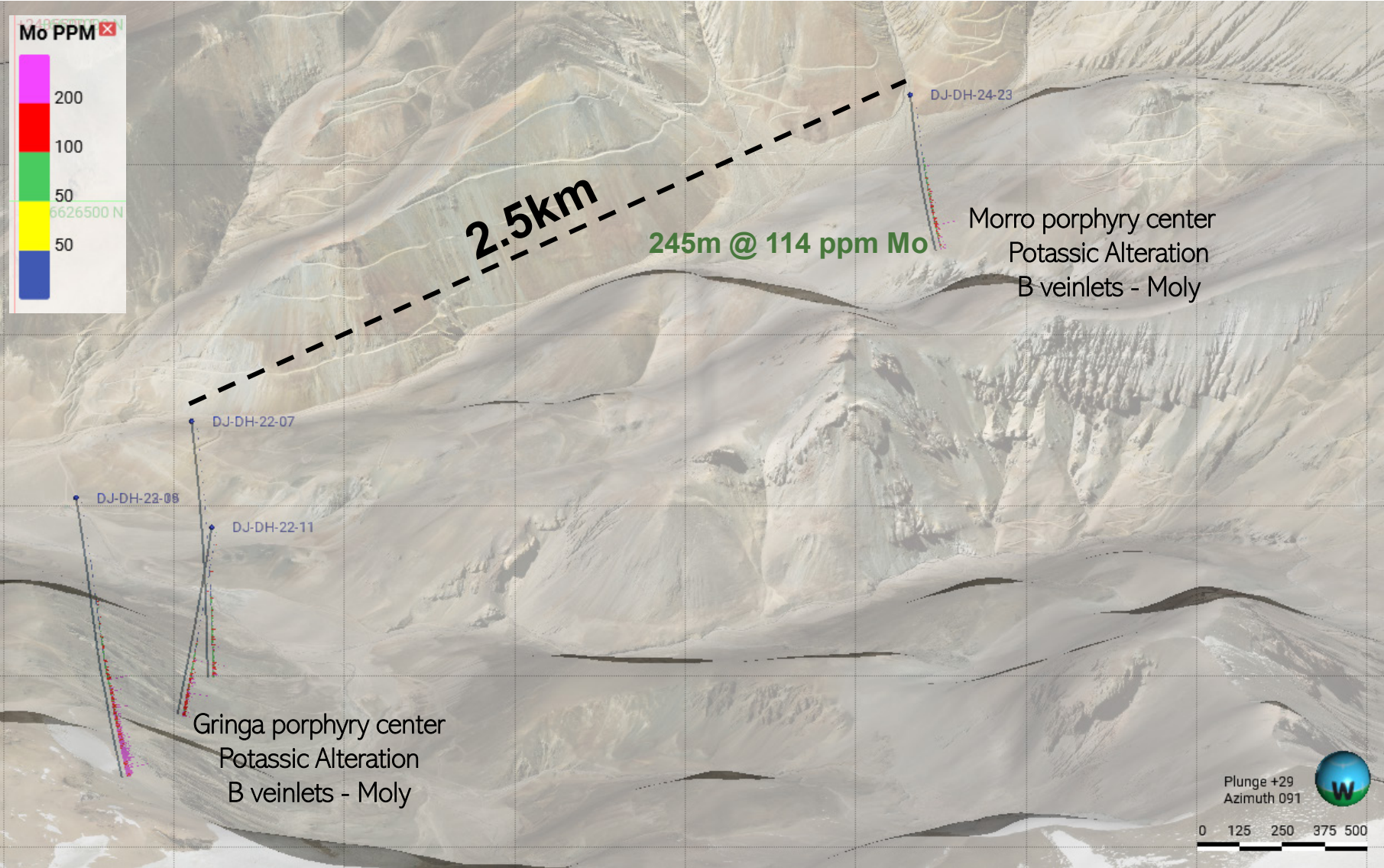


DJ-DH-23-13
Diatreme breccias
IS mineralization
Mineralized porphyry
fragments



DJ-DH-23-12
High-grade Cu-Au-Ag
High-sulfidation
mantos and breccias

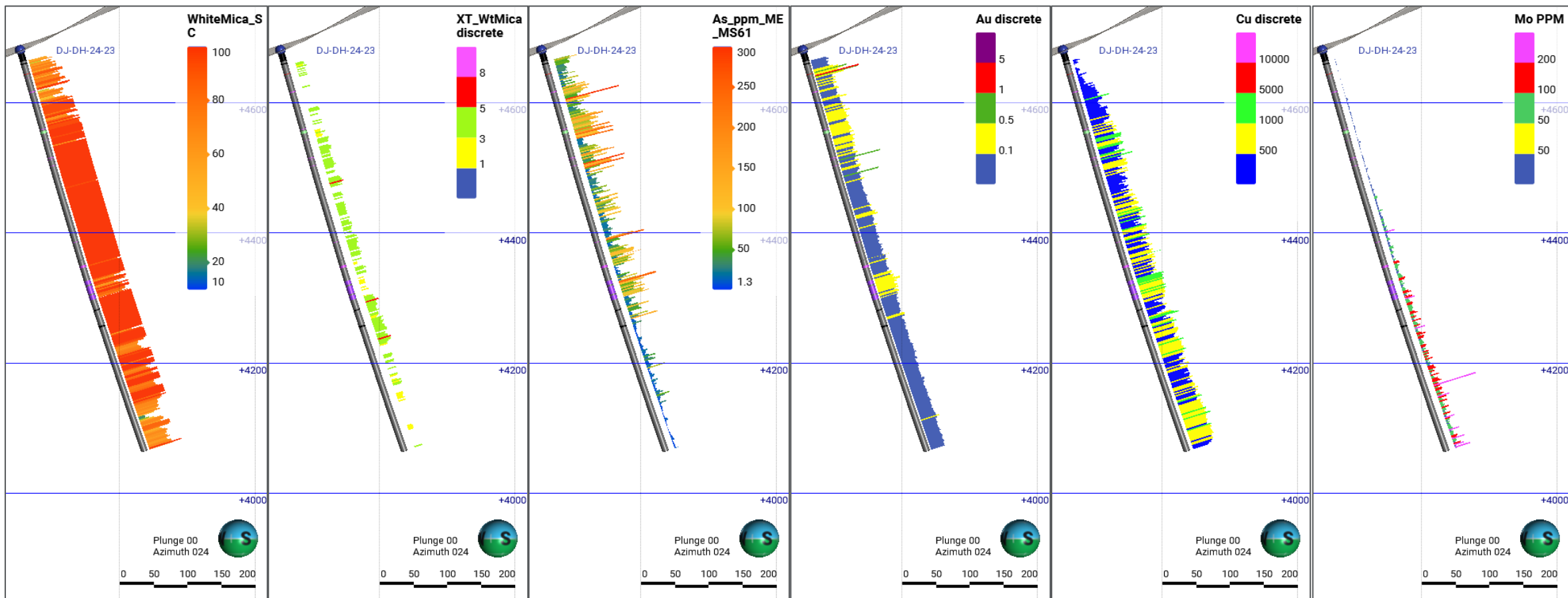
Don Julio Porphyry Centres – Morro



- Second porphyry center within DJ lithocap
- Discovered by Sable based on mapping, geochemistry, and spectral followed by drilling in 2024

Morro: transition from Adv Arg to Potassic with Moly mineralization, indicative of preservation of the porphyry system

DJ-DH-24-23



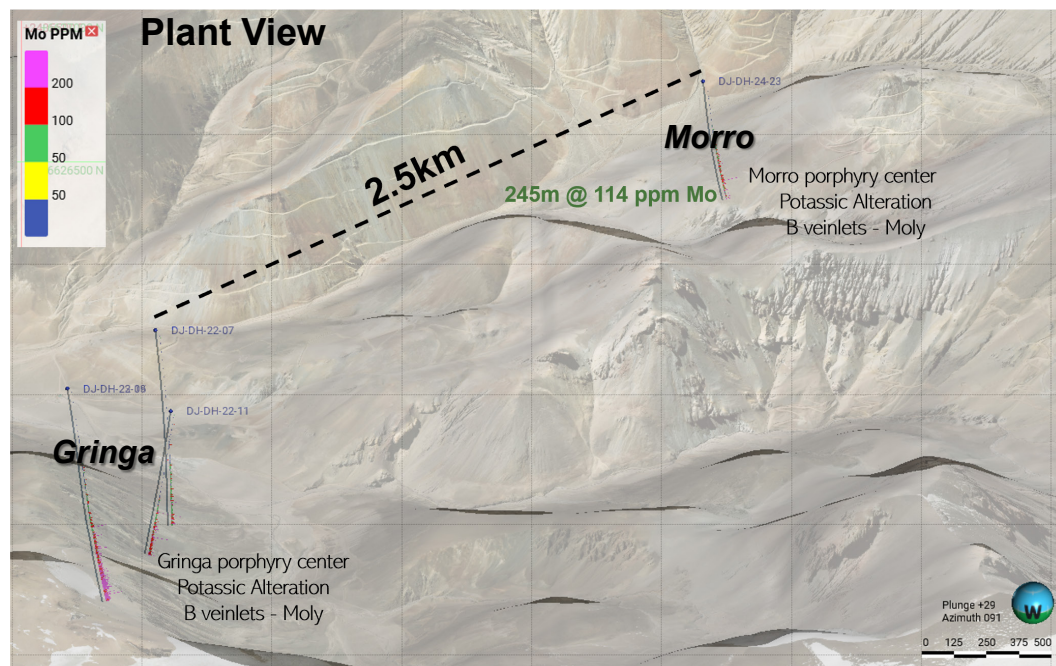
Transition from sericitic to potassic alteration

Little dickite and pyrophyllite on the upper part of the hole
Much less advanced argillic than Gringa

Shallow gold anomalies

Increase in copper and Mo with depth associated with B veinlets
and potassic alteration

Morro – La Gringa Porphyry Style Mineralization

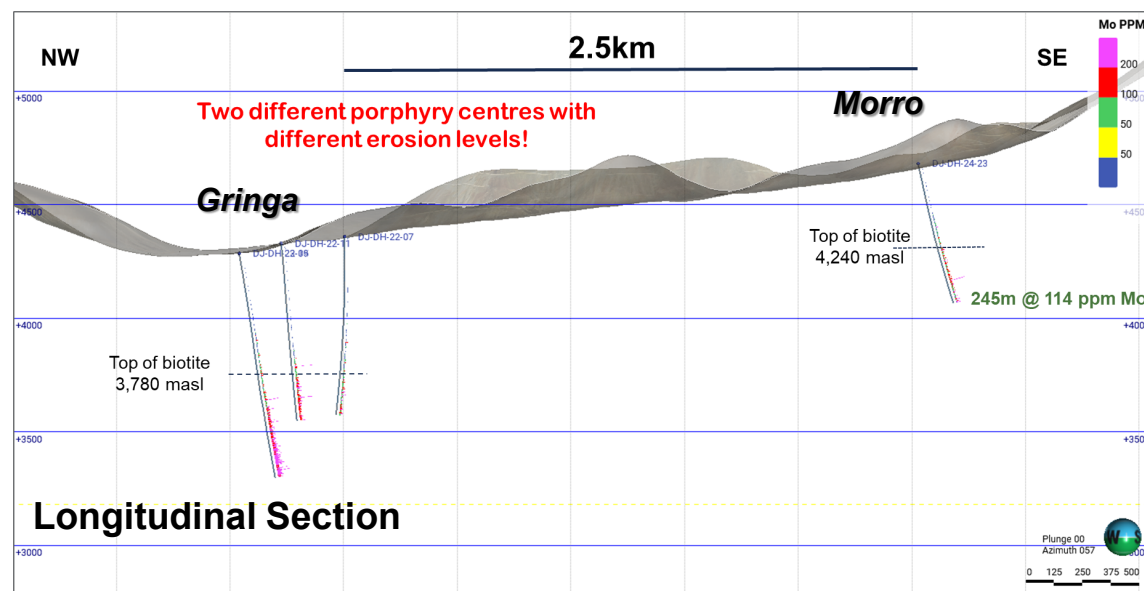
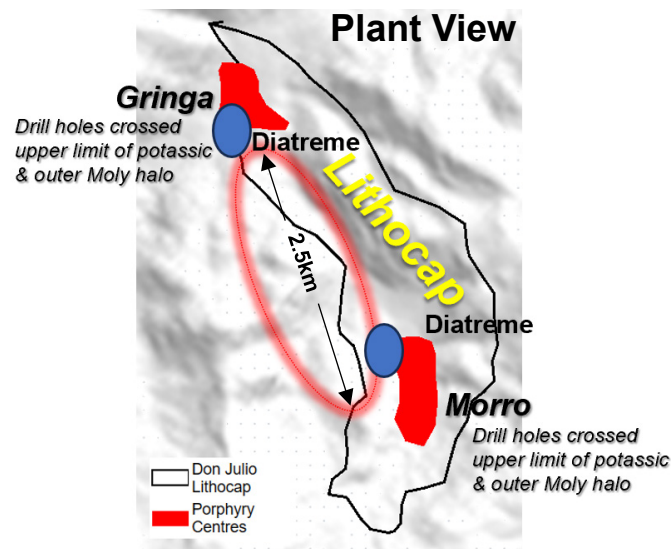


Morro – La Gringa Relationship

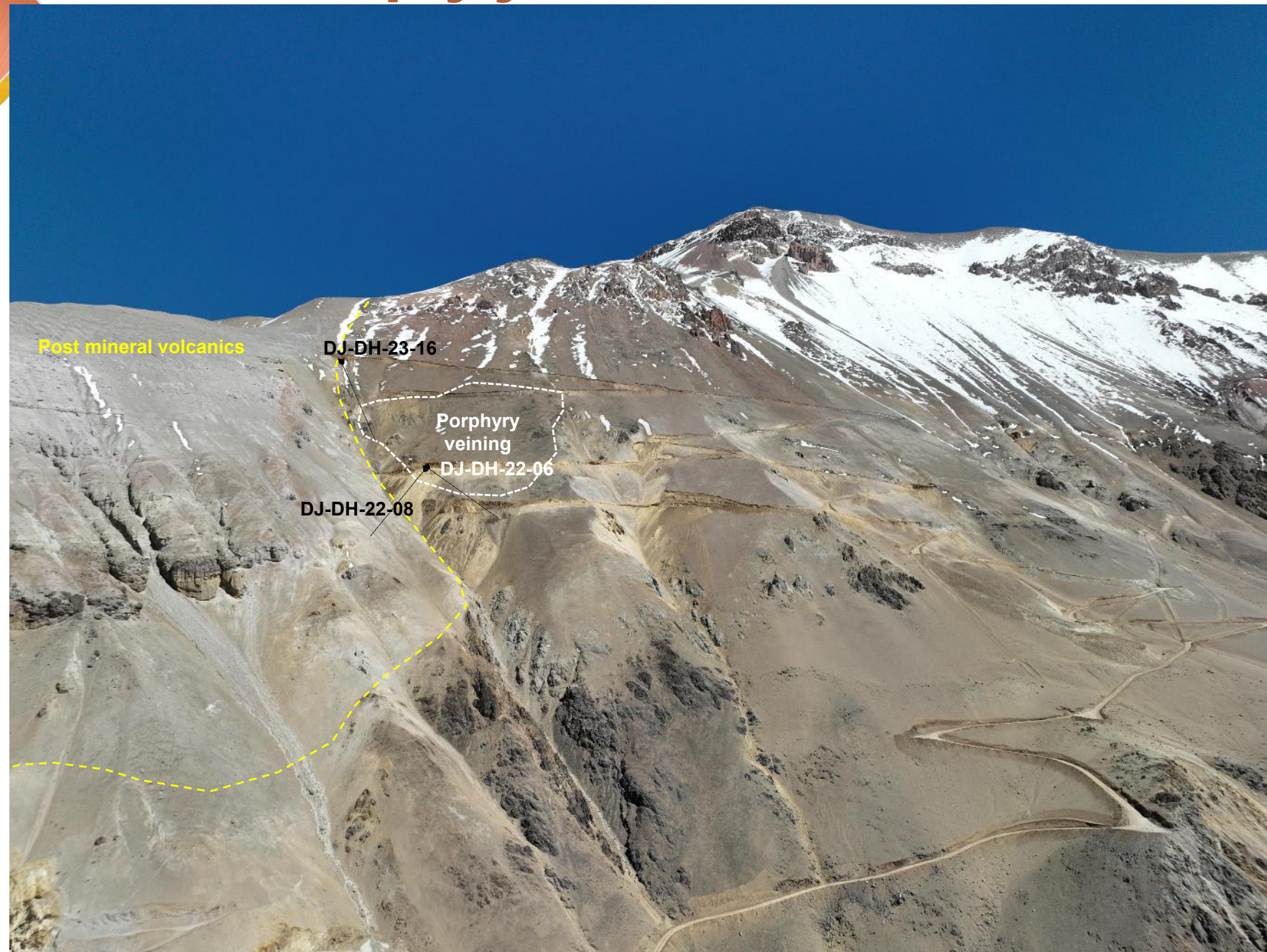
1- Two different porphyry centres with different erosion levels?

Or

2- A larger composite porphyry system below the outcropping roots of a large lithocap with known Cu-Au mineralization in veins and hydrothermal breccias?



Don Julio Porphyry Centres – Punta Cana



- Discovered by Sable in 2021
- Outcropping at 5,100 masl
- Au-Cu in “Maricunga” type veinlets
- Surface grades up to 3.8 g/t Au and 0.5% Cu

Don Julio Porphyry Centres – Punta Cana

DJ-DH-22-06

75.25m @ 0.44 g/t AuEq from 324.0m

Including

29.5m @ 0.68 g/t AuEq from 335.5m

14.0m @ 0.29 g/t AuEq from 260.5m

37.6m @ 0.24 g/t AuEq from 155.5m

DJ-DH-22-08

403m @ 0.27 g/t AuEq from 150.0m

Including

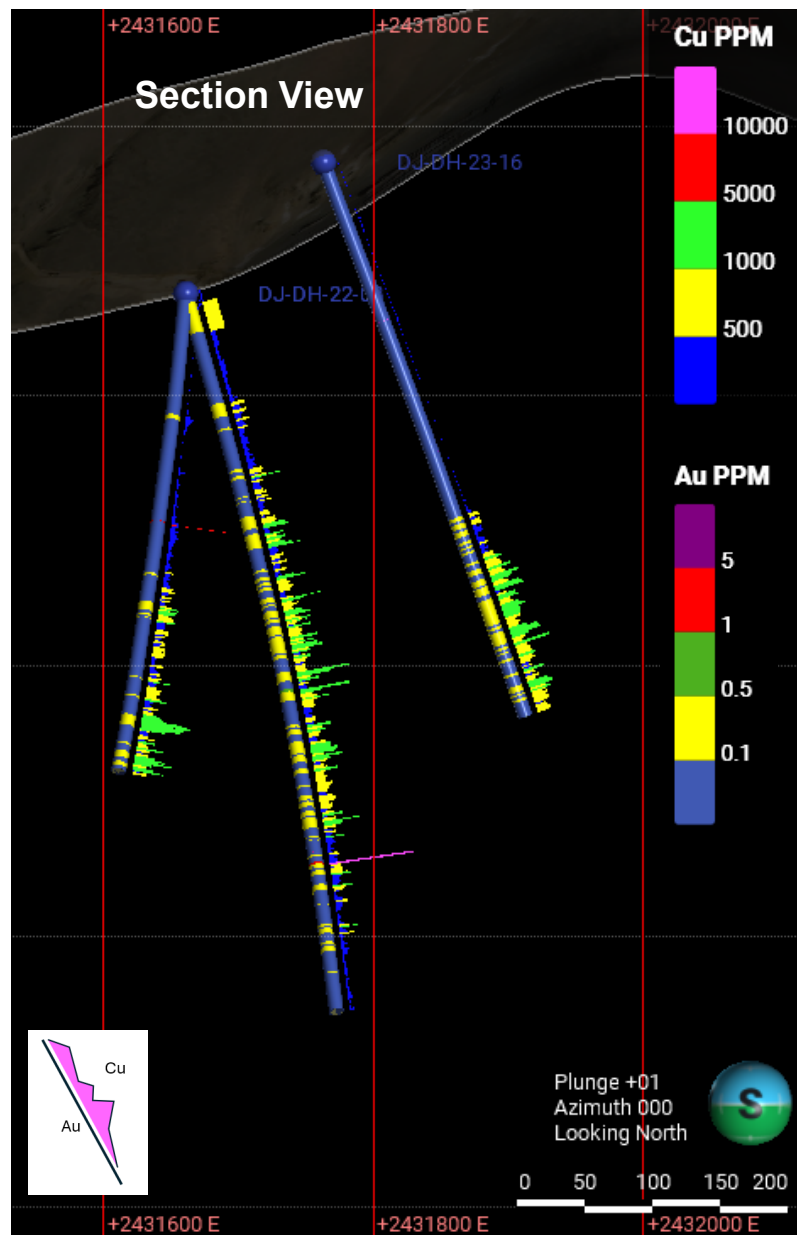
351.7m @ 0.29 g/t AuEq from 150.0m

DJ-DH-23-16

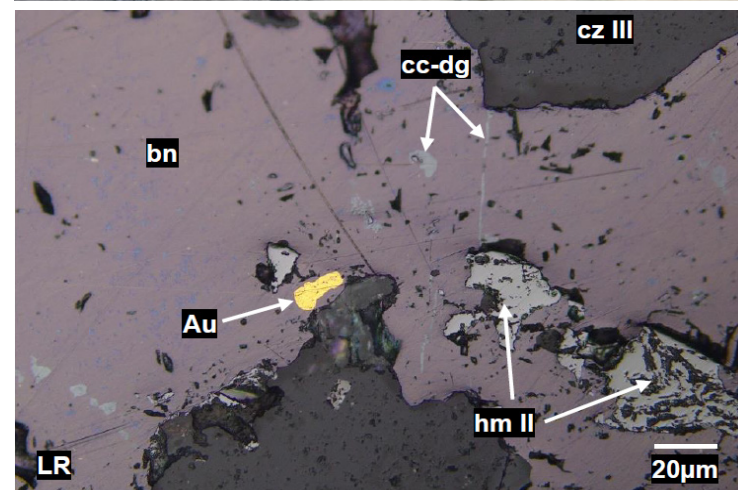
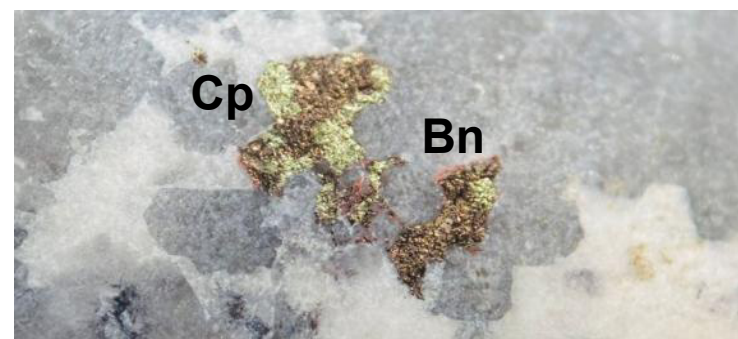
156.0m @ 0.32 g/t AuEq from 281.0m

Including

55.0m @ 0.45 g/t AuEq from 330.0m

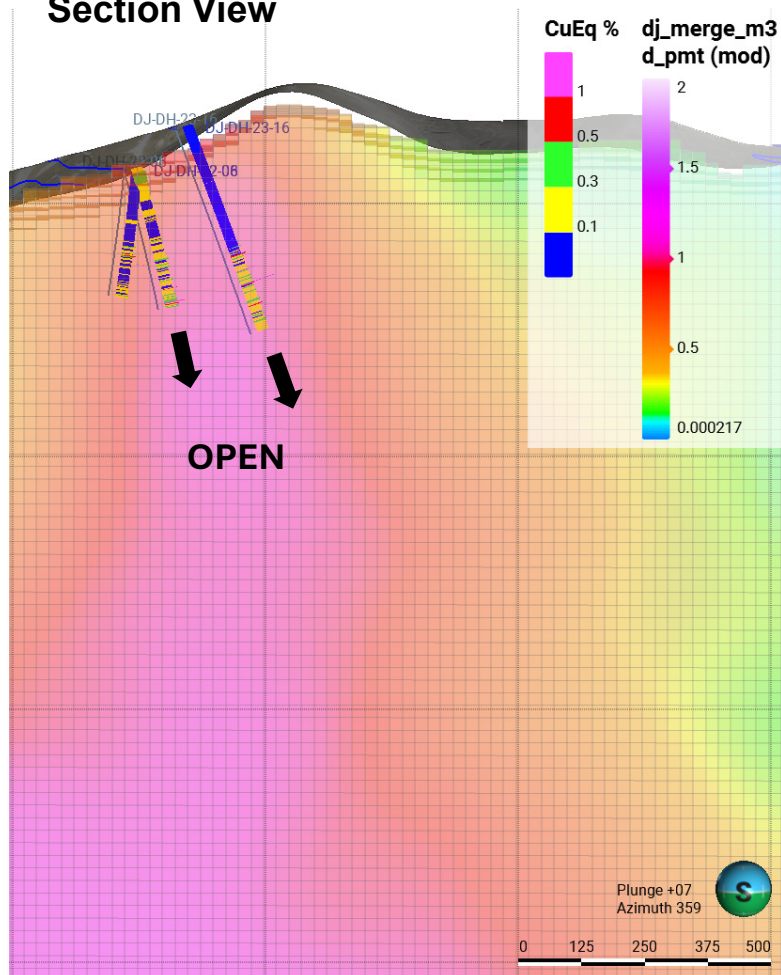


Proven Cu increase
with depth



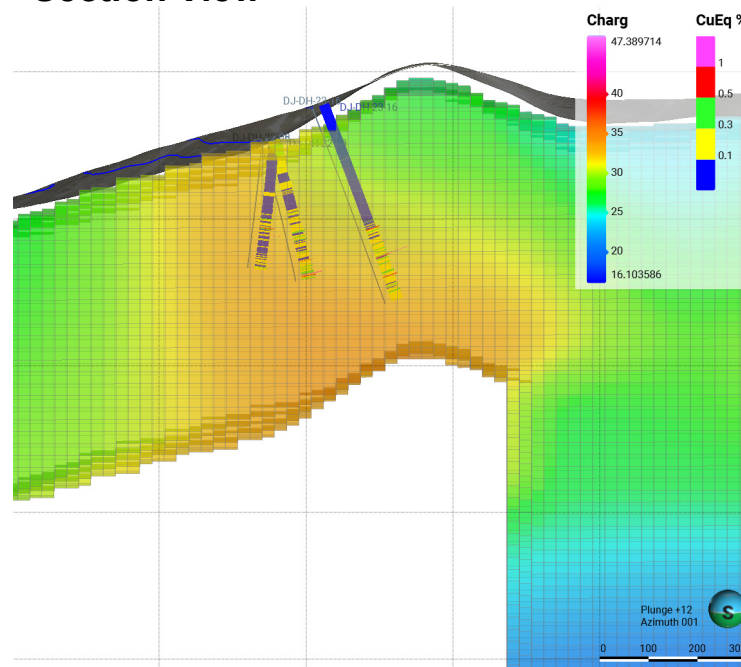
Punta Cana – High Level Maricunga type porphyry

Section View



Deeply rooted magnetic anomaly

Section View



Coinciding IP anomaly

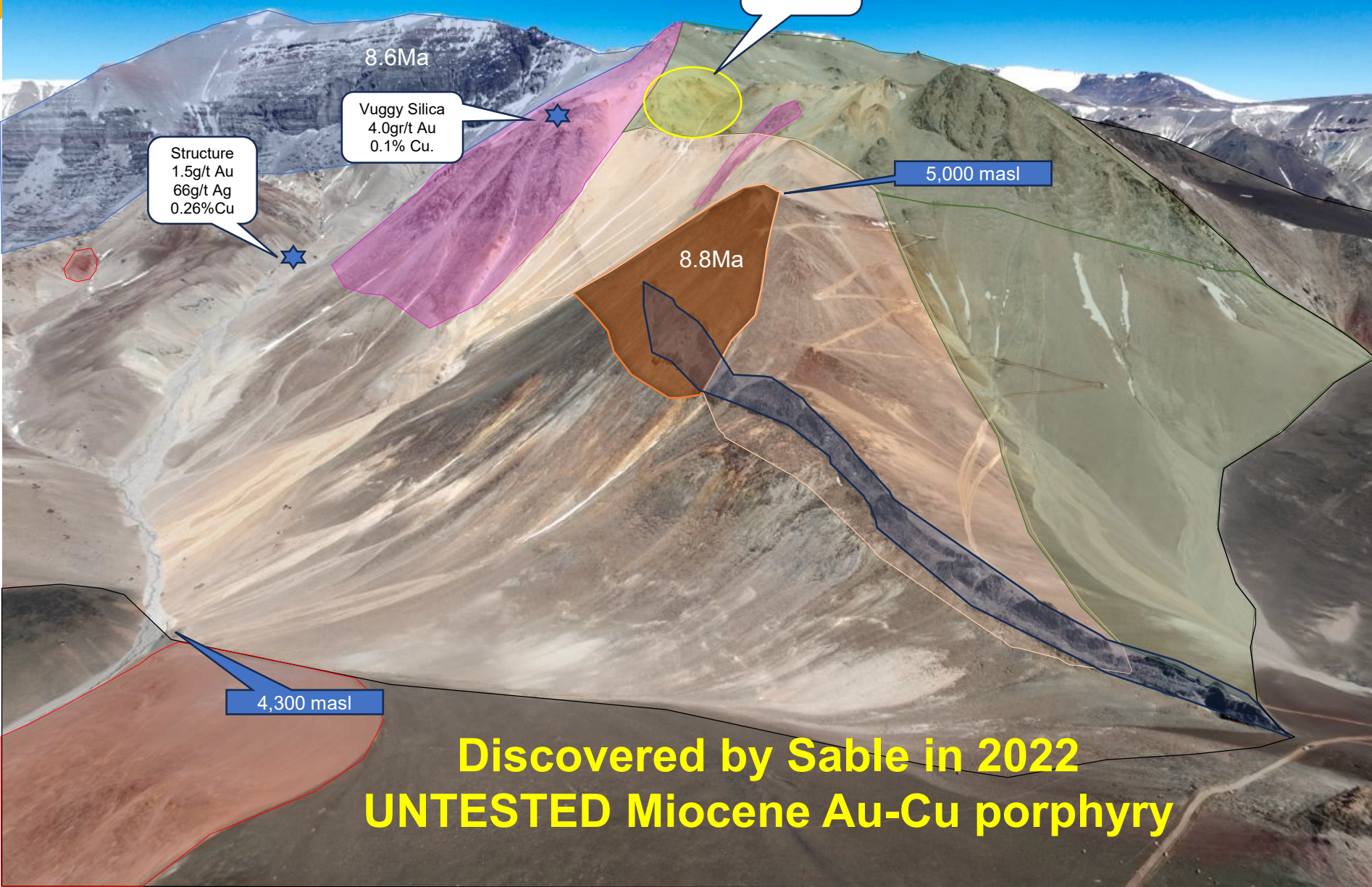
What's different about Punta Cana with respect to the Gringa-Morro zone?

- No sericitic or advanced argillic
- Ill, Chl, Ca
- No D veinlets
- Subvolcanic features associated with some of the intrusions
- Mt>Py>Cp on surface
- Mt>Bn>Cp in drill holes
- Punta Cana is a high-level Au-rich porphyry transitioning to a more Cu-rich porphyry
- Only three holes, all of them intercepted consistent Au-Cu-Ag mineralization
- Additional drilling required

Don Julio Porphyry Centers – Tocota

Looking WNW

Similar to Punta Cana in age and style of mineralization



- Miocene volcanoclastics 8.6 Ma
- Postmineral Miocene Dyke
- Miocene volcanic and intrusion complex, Tocota
- Qz-Diorite unmineralized
- Diorite medium to fine grained with no veinlets.
- Diorite porphyry medium to fine grained with “Maricunga” and B type veinlets. Up to 0.37g/t Au and 0.33% Cu



← Maricunga type veinlets

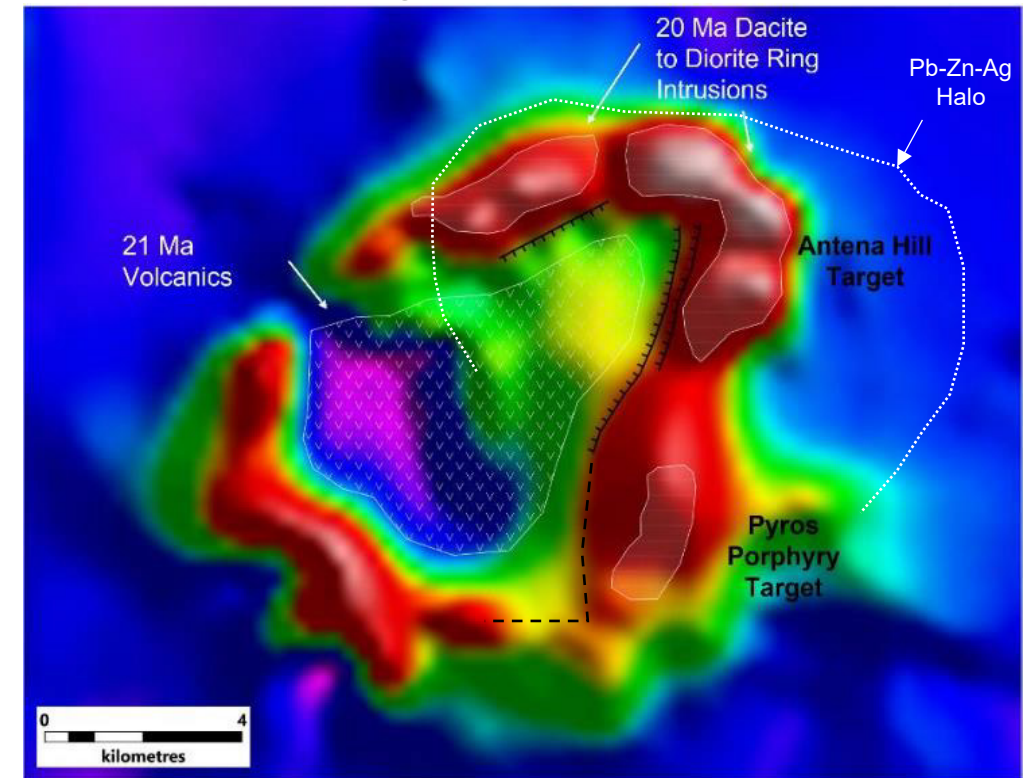
- Permian Granites
- Carboniferous sediments
- ★ Vuggy silica floats returned 4.0 g/t Au and 0.1% Cu. Sulfate structure returned 1.5 g/t Au; 66g/t Ag; 0.26%Cu
- As, Te, Bi soil anomalies. Topographically higher than the outcropping porphyry

Discovered by Sable in 2022
UNTESTED Miocene Au-Cu porphyry

El Fierro Project

- ~75,000 ha property located 120 km south of Filo del Sol – Jose Maria porphyry systems (Vicuna district) in similar age rocks
- Potential for a multi-million tonne Cu-Au-Mo deposit
- 10 x 10 km Cu-Au-Mo porphyry and sub-epithermal veins footprint associated to a large magnetic anomaly produced by ~20 Ma intrusive – caldera complex
- Sable's first round of drilling started in February 2021 (3,278 m) and second round was completed in May 2022 (12,006 m) for a total of 15,284 m
- Most drilling focused on vein targets (9,700 m), potential for porphyry mineralization was recognized in December 2021 (5,584 m of drilling)
- The Pyros target is a large Cu-Au-Mo Miocene porphyry system (20 Ma) that has only been partly drilled at its southern portion

Plan View – Aeromag Data



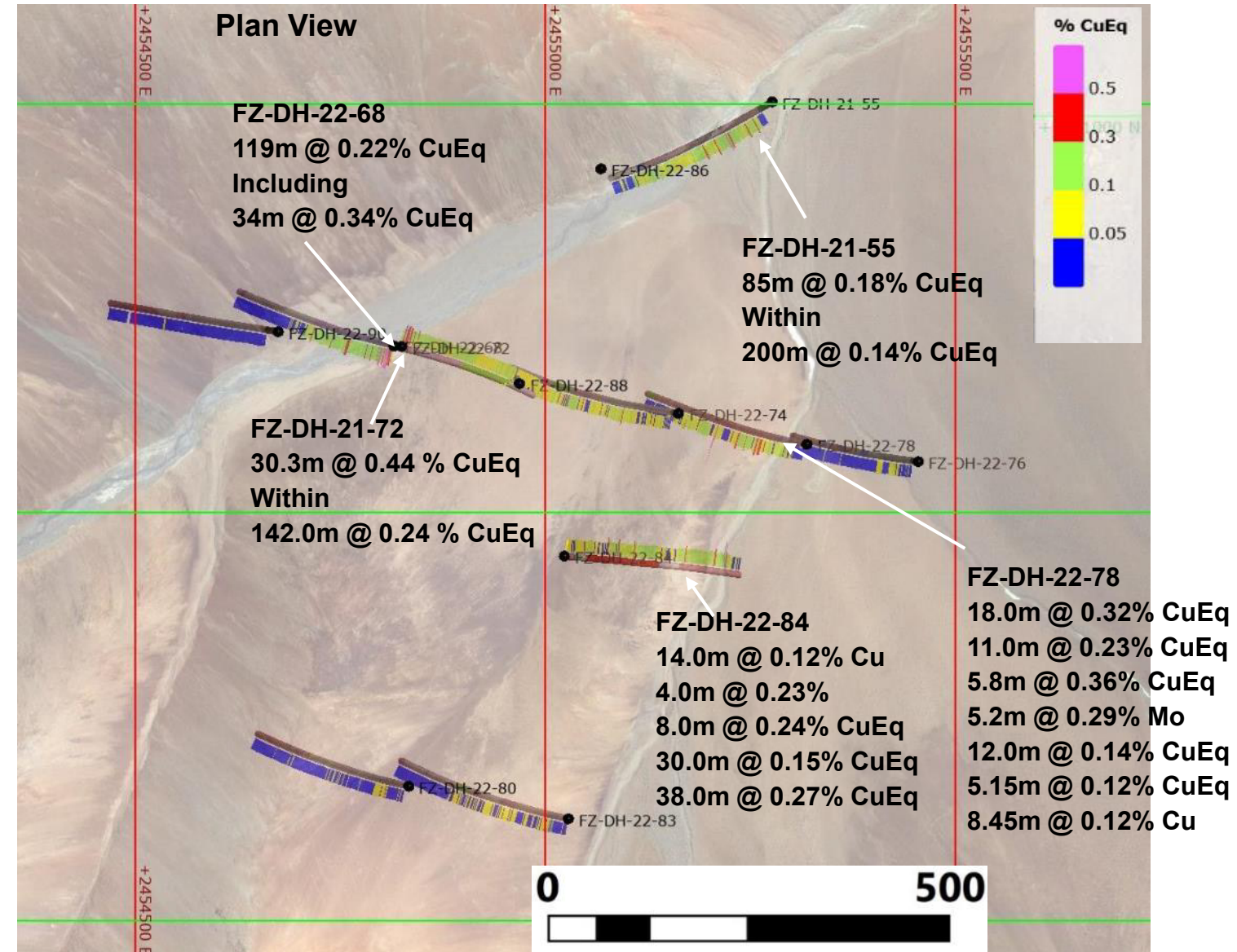
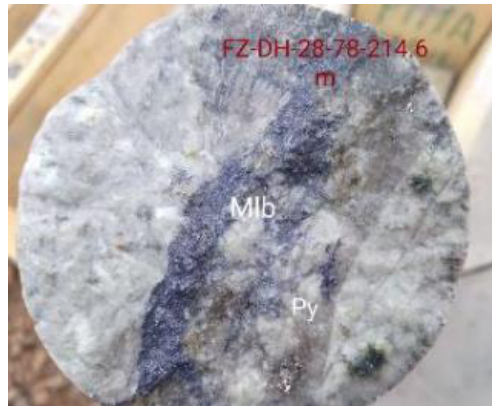
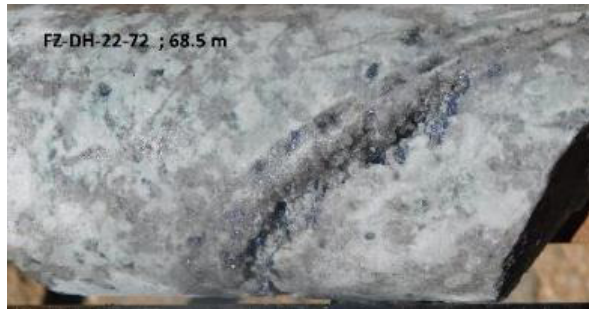
- Sable recently signed an agreement with Moxico Resources in which Moxico can earn 51% of the El Fierro Project, fulfilling payments and exploration commitments during the next five years

(<https://sableresources.com/sable-and-moxico-resources-sign-letter-agreement-for-the-el-fierro-project-and-the-cerro-negro-property-san-juan-province-argentina/>)

- The first drill campaign funded by Moxico was completed on April 14, 2025, 1,411m in four holes (*Results Pending*)

Pyros Target – El Fierro Project

Positive results from first drilling round

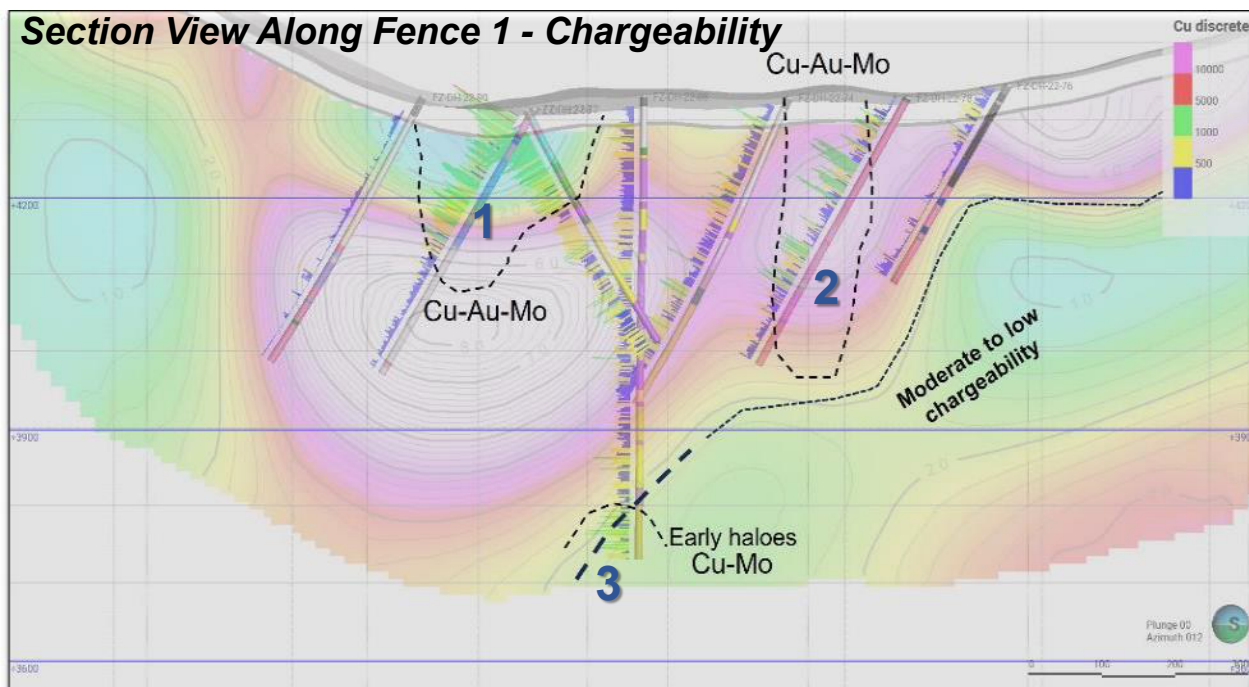
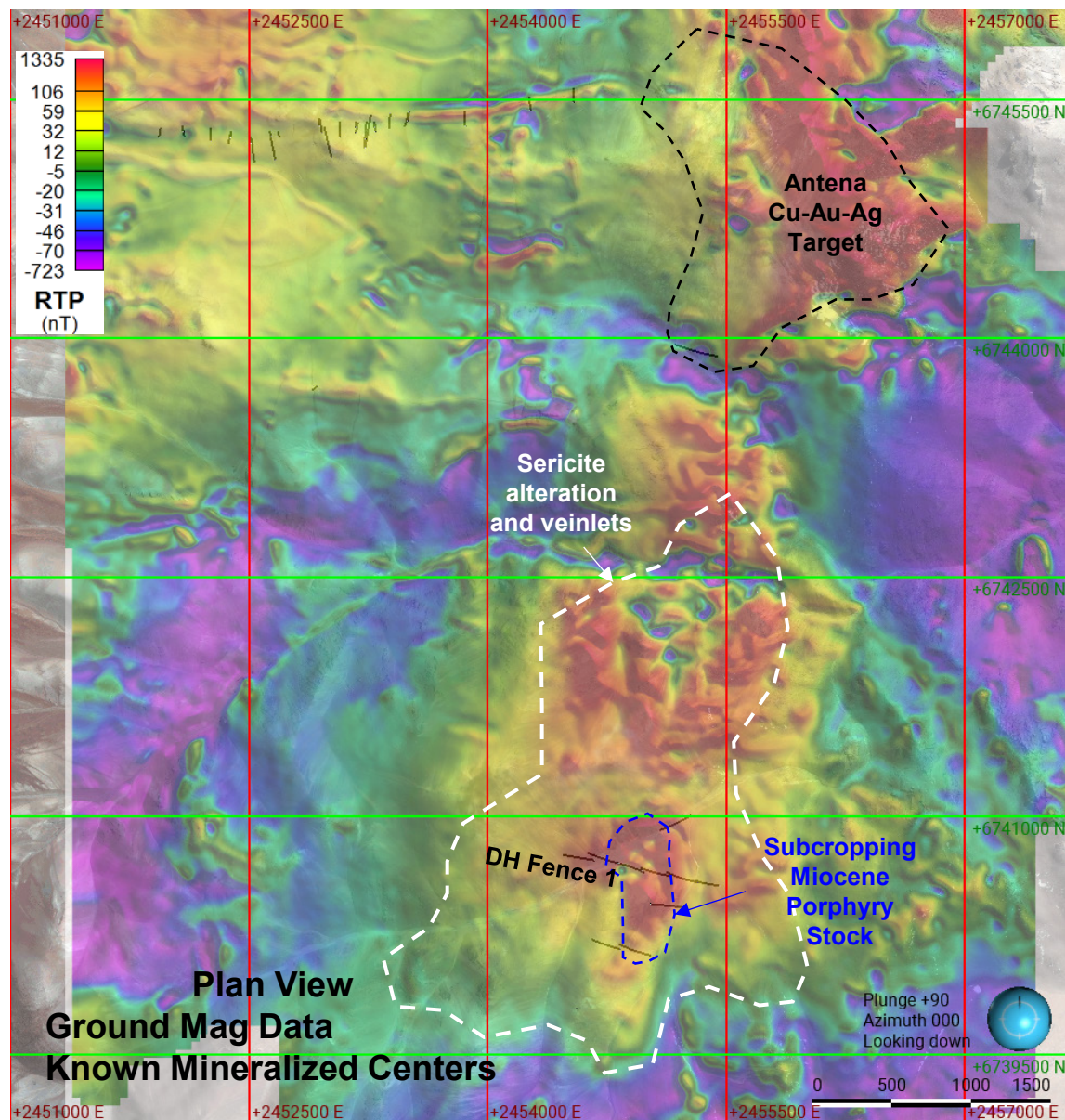


Individual Cu, Au, Mo values and CuEq calculation in Sable PR Oct 12, 2022

<https://wp-sableresources-2023.s3.ca-central-1.amazonaws.com/media/2023/03/SAE-Press-Release-Oct12-22-2022-2023-Exploration-Program.pdf> 24

Pyros Porphyry – El Fierro Project

Large footprint with highly prospective zones



- Pyros remains the most important target within the El Fierro project
- Previous drilling indicates that at least three anomalous zones have potential to host high-grade Cu-Au-Mo mineralization at depth and around a precursor - low-grade porphyry stock
- Only <20% of the surface footprint has been tested. Sericite alteration and porphyry veinlets extend for up to 4km long
- Antena Cu porphyry – IOCG only 1 drillhole: **8.75m @ 0.88% CuEq***

Cerro Negro Project

- Includes the Cerro Negro and Potrerillos properties and represents an innovative play of porphyry exploration below gravels
- Prime location within Miocene belt in San Juan
- 35km of Challenger's Hualilan skarn project hosting *60.6 MT @ 1.4 g/t AuEq for 2.8 MOz AuEq*

(<https://challengergold.com/projects/argentina/hualilan-resource-table/>)

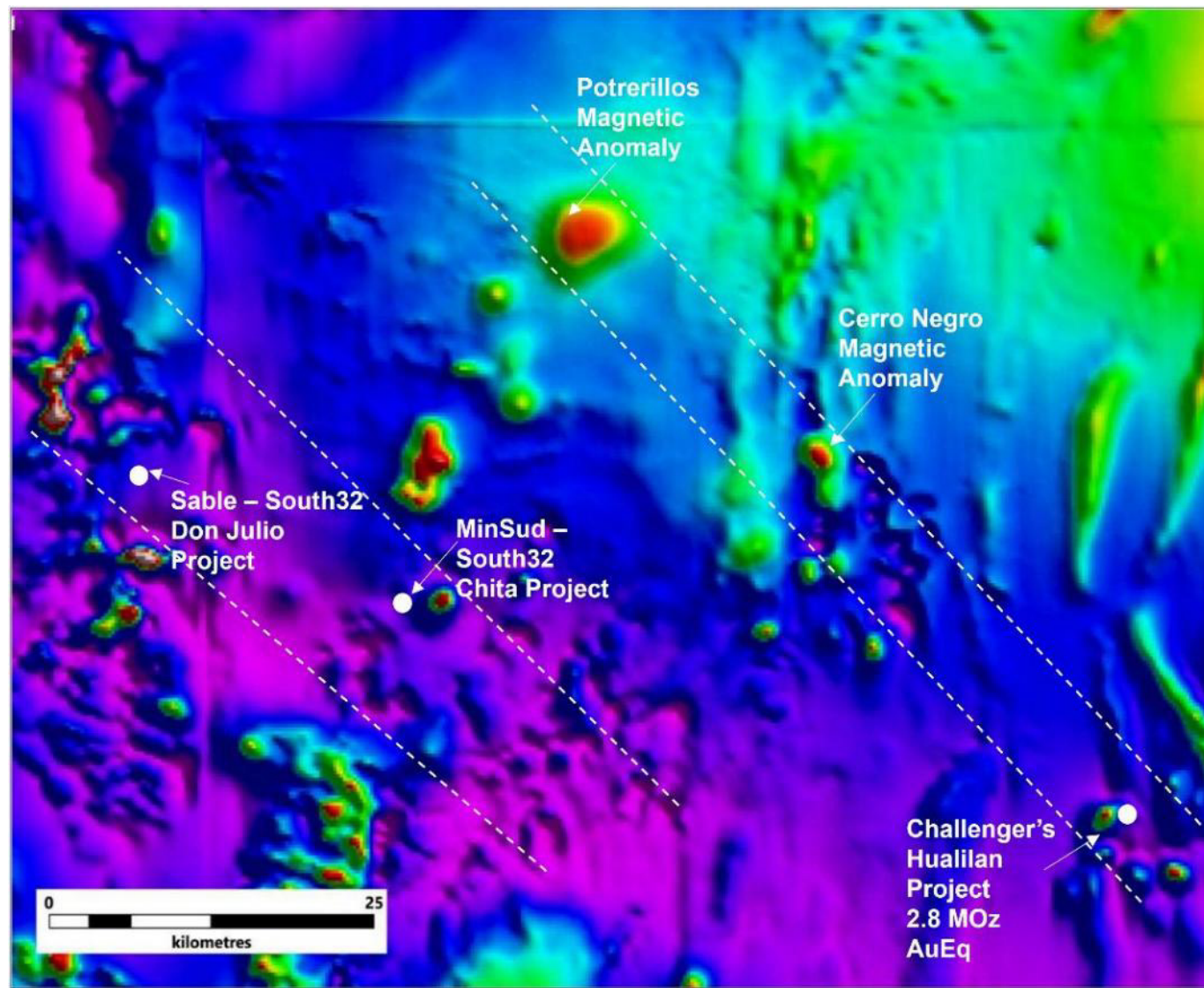
- 34km of MinSud and South32 Chita Valley Project – *188M Tonnes @ 0.41% CuEq (Ind) and 573M Tonnes @ 0.36% CuEq (Inf)*

(<https://minsud.com/our-project/>)

- 50 km of Sable and South32 Don Julio Project
- Associated to regional NW structures
- Sable recently signed an agreement with Moxico Resources that grants Moxico an earn-in of 51% of the Cerro Negro Project, fulfilling payments and exploration commitments during the next five years

(<https://sableresources.com/sable-and-moxico-resources-sign-letter-agreement-for-the-el-fierro-project-and-the-cerro-negro-property-san-juan-province-argentina/>)

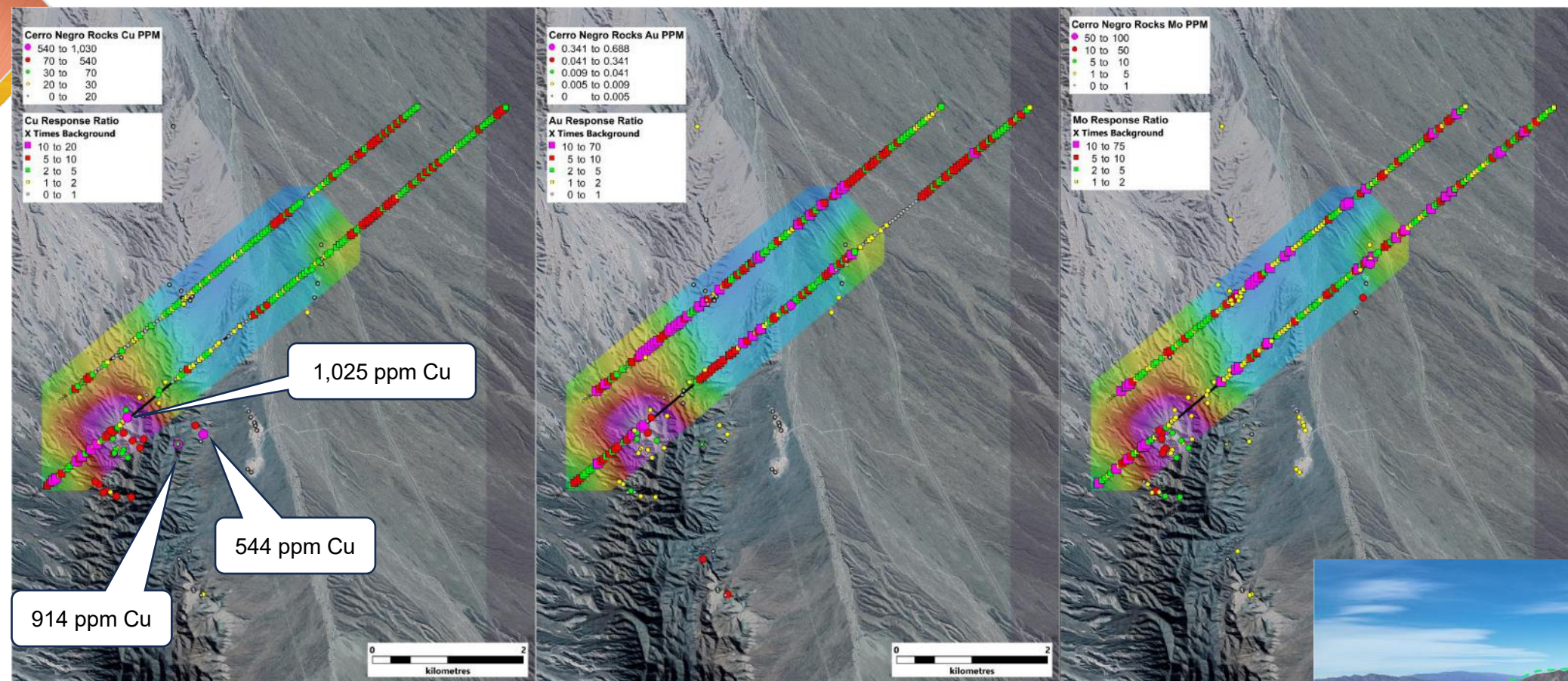
Plan View AeroMag Data



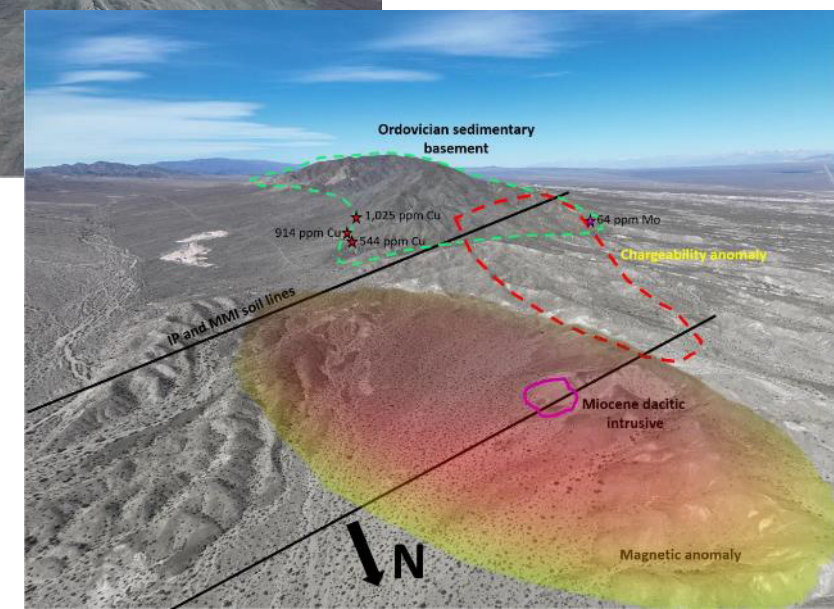
IP surveys and geochemistry will start in June 2025 at Cerro Negro

Cerro Negro Project

- MMI soil sampling showing consistent anomalies with response ratios of up to 20 for Cu, 70 for Au, 96 for Ag, and 75 for Mo



- Early-stage Project. Concealed porphyry target below Quaternary gravels
- Regional Magnetic Anomaly
- Outcrops of Miocene intrusive rocks coinciding with the Magnetic feature
- Two chargeability anomalies, one SW of the magnetic anomaly and a minor one on the NE
- Anomalous rock samples up to 0.1% Cu and 64 ppm Mo

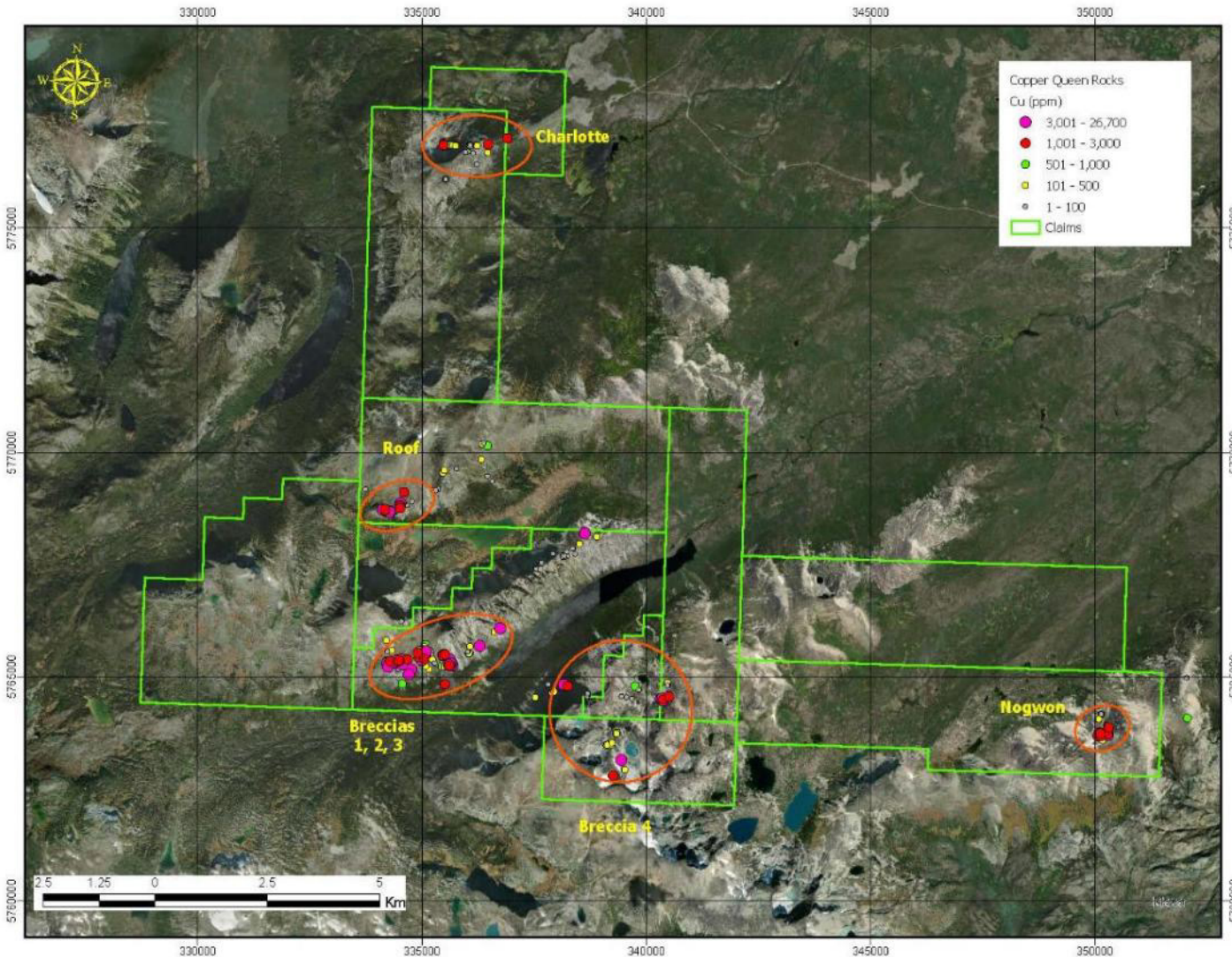


British Columbia

- Sable controls 22,981 hectares in four properties across prolific copper districts in British Columbia
- Properties are 100% owned by Sable and staked in early 2024 after regional target generation work
- Sable initiated basic fieldwork in summer 2024 focused on the Copper Queen property which has grown and advanced with the intention of being drilled in 2025
- The Copper Prince and Core Mountain show promising results and require additional work to get to drill target definition



Copper Queen Project



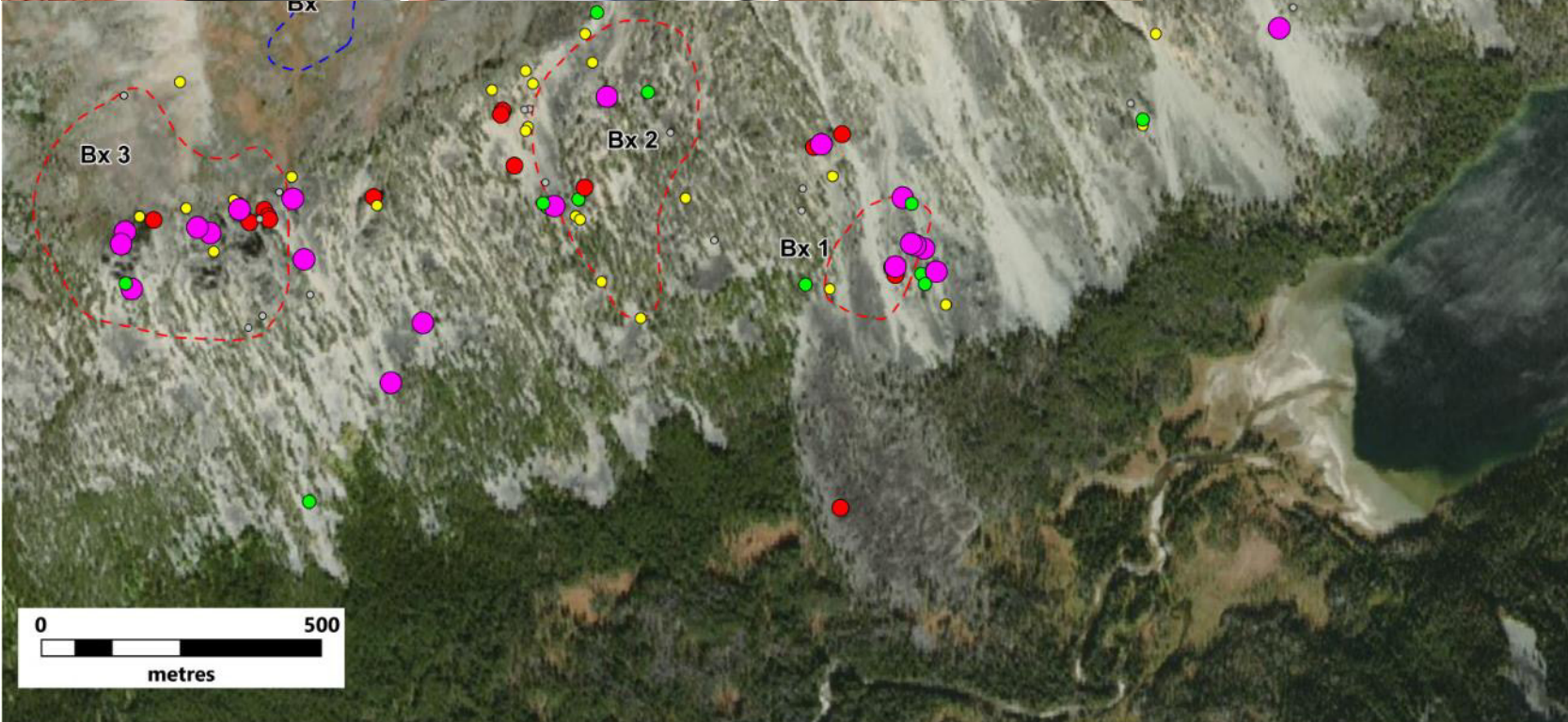
- **Breccias 1, 2, 3**
- Values up to 1.07% Cu, 27.7 g/t Au, 214 g/t Ag
- **Roof Target**
- Values up to 2.6% Cu; 0.19 g/t Au, and 38 g/t Ag
- **Nogwon Target**
- Values up to 1.25% Cu, 20.8 g/t Ag, and 0.1 g/t Au
- **Charlotte Target**
- Values up to 0.27% Cu, and 880 ppm Mo
- **Breccia 4 Target**
- Values up to 0.68% Cu, and 473 ppm Mo

Intensive exploration in summer 2024 led to the discovery of four additional targets to the original Anaconda breccias

Copper Queen Main Target - Breccias 1-2-3

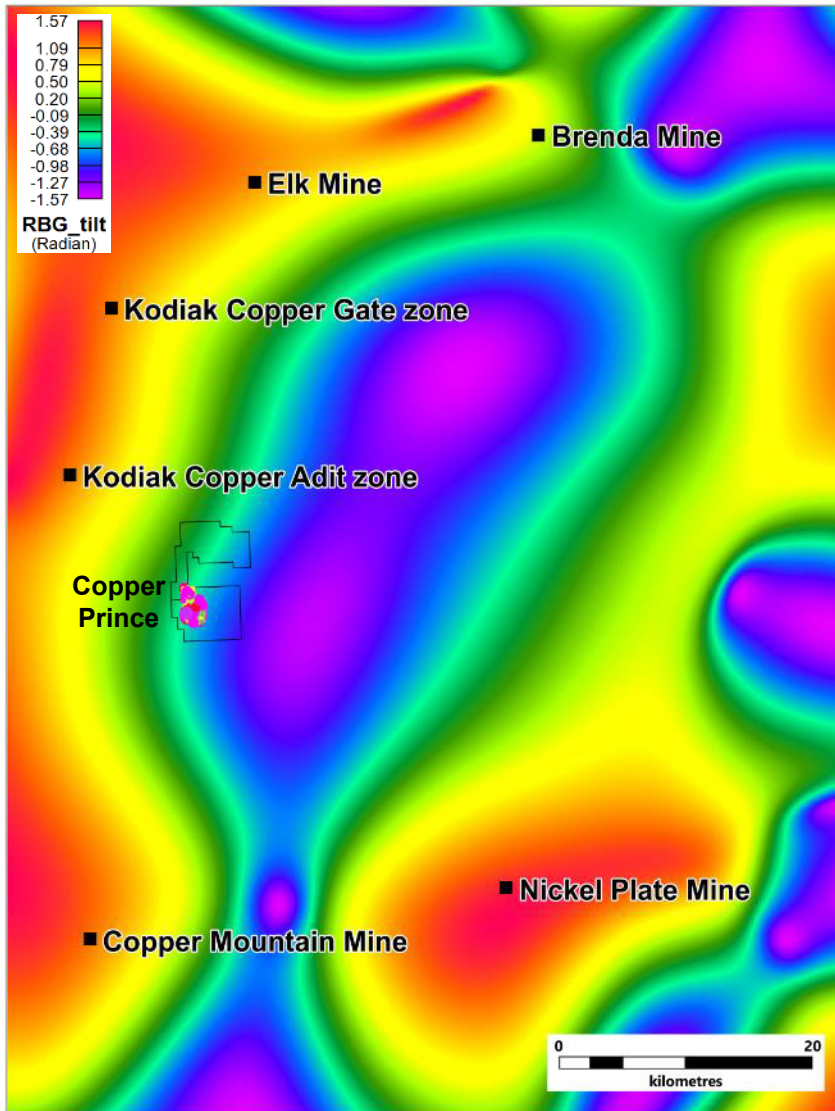


CopperQueen Rocks Cu PPM	
●	3,000 to 26,700
●	1,000 to 3,000
●	500 to 1,000
●	100 to 500
●	0 to 100

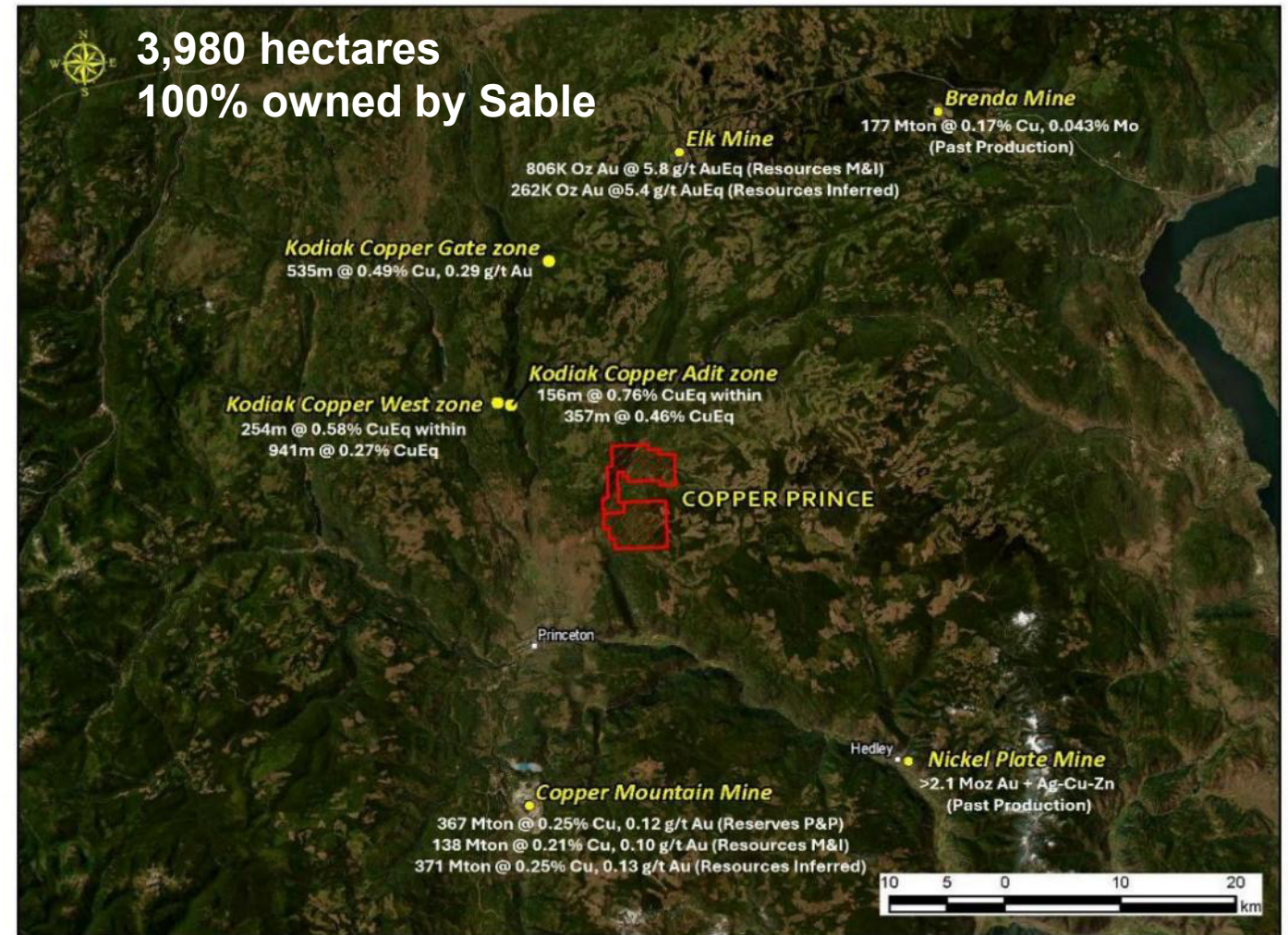


- Cu-bearing breccias historically explored by Anaconda in 1968
- Breccias 1, 2, and 3 outcrop on the NW side of McClinchy Lake
- Rock samples up to: 1.07% Cu
27.7 g/t Au
214 g/t Ag
- Mineralization in breccia cement and locally in quartz veins around the breccias
- Best mineralization has been observed in Breccias 1 and 3, Breccia 2 is mostly mineralized in structures on its western margin
- All results received
- VTEM survey completed in May 2025
- MYAB application in process
- Plan and Budget proposed for 2025

Copper Prince Project



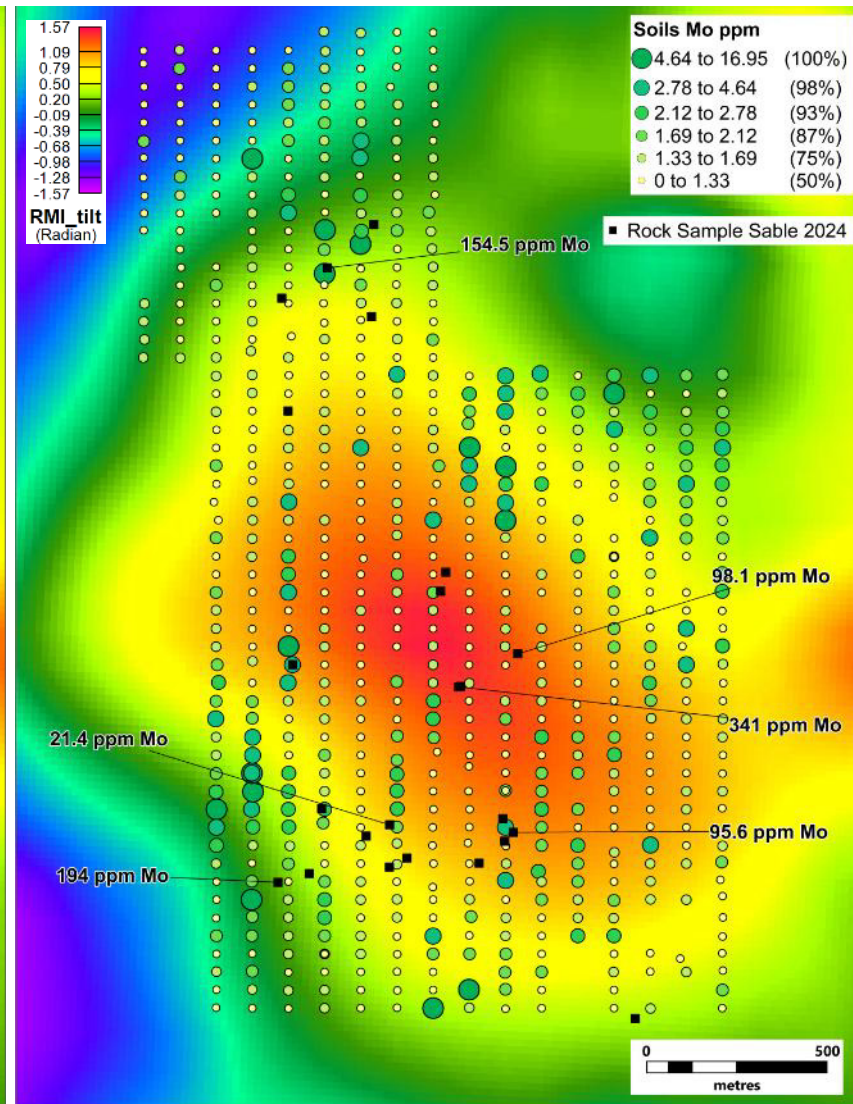
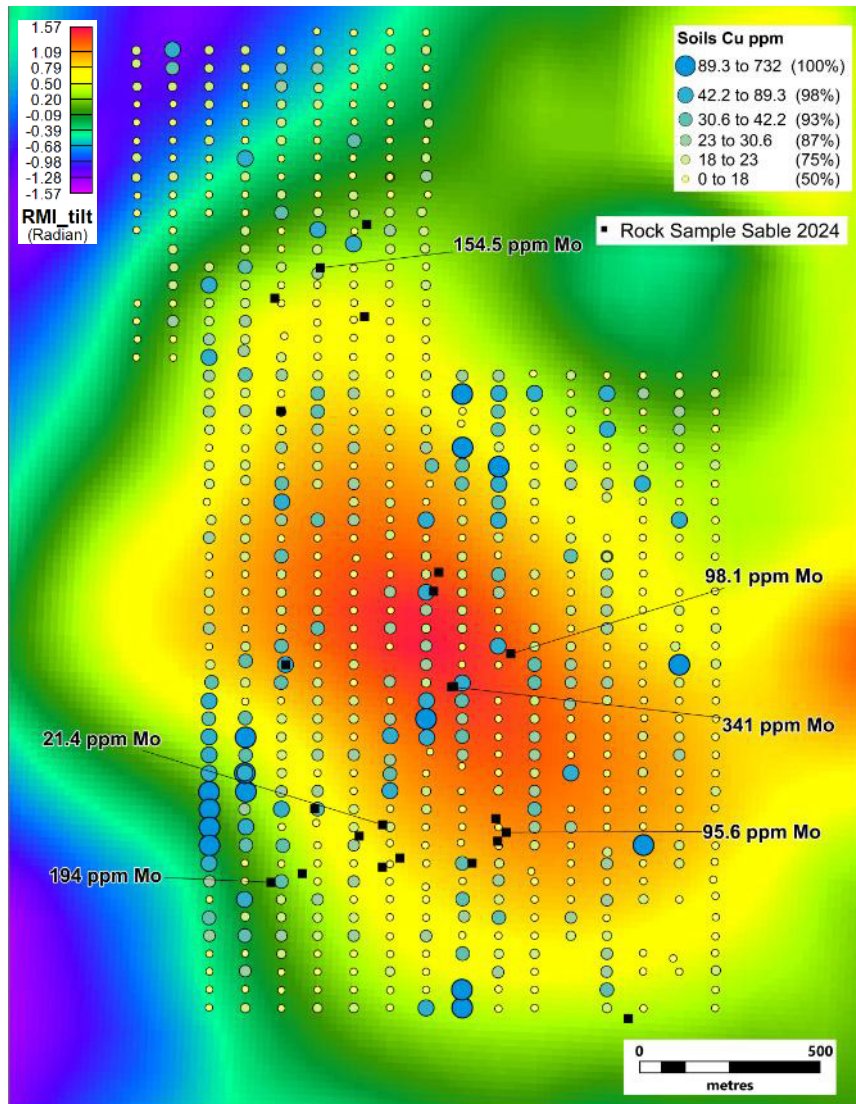
- A regional gravity anomaly controls the location of the large deposits in the district. Copper Prince has the right location



- Located 13km NE of Princeton, BC
- 25km NE of Hudbay's Copper Mountain mine
- 40km SW of the past producing Brenda Mine
- 26km south of the Elk Gold Mine
- Contiguous to Kodiak Copper's land package

Sources
<https://hudsonbayminerals.com/canada/default.asp>
<https://gold-mountain.ca/operations/>
<https://kodiakcoppercorp.com/news/news-releases/>

Copper Prince Project



- Excellent access and infrastructure
- Large and consistent Cu-Mo anomalies associated with a magnetic feature
- Rock samples returned up to 341 ppm Mo
- Several hundred meters of boulders with sericitic alteration and porphyry features
- Five Cu-Mo showings within the property
- Only 10% of the property has been reviewed
- Additional work consisting of soil sampling, mapping, IP and Mag planned will start in June

Core Mountain Project



- Located in the prolific Ootsa Lake district and surrounded by multiple large Cu-Mo-Au deposits
- Staked based on favourable geology and existing Cu-Au showings
- Preliminary field review shows abundant Cu mineralization in two styles: chalcopyrite bearing veins and dissemination/replacement in a flow-banded rhyolite
- Observations and results guarantee additional work in 2025. Only a small part of the property was reviewed

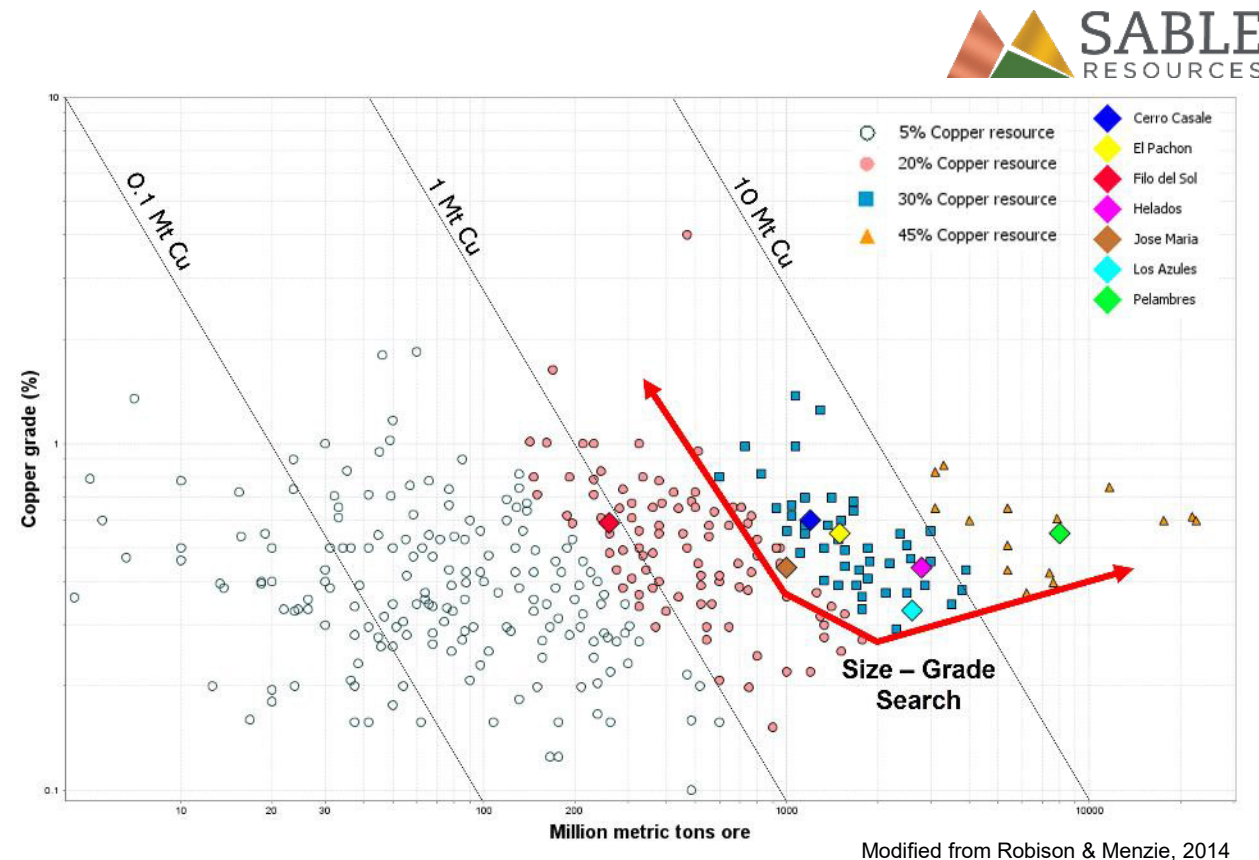
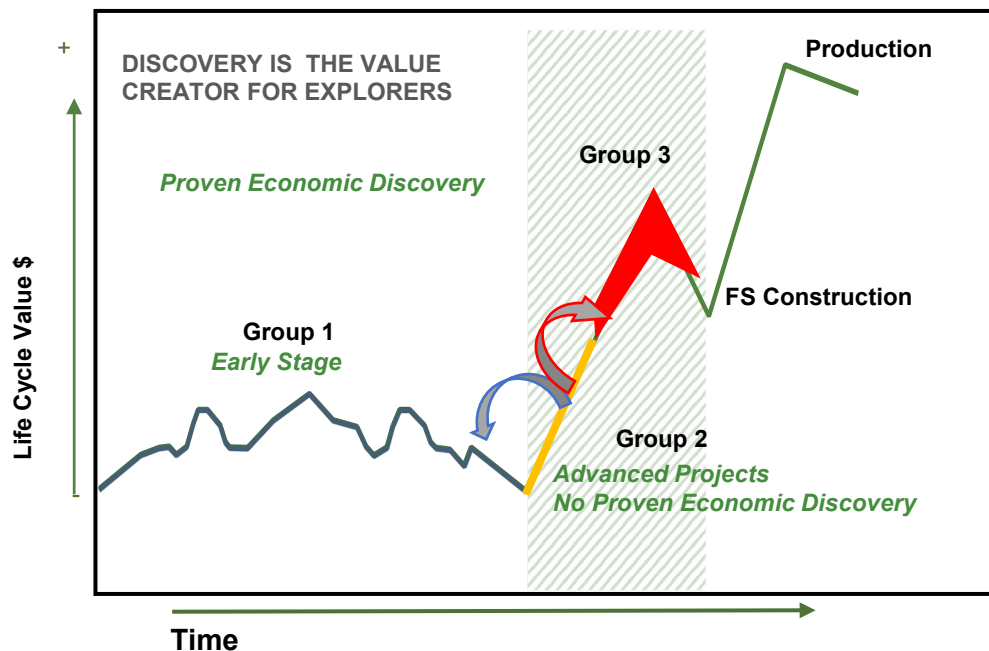
Sample	North	East	Elevation	Site	Ag ppm	Au ppm	Cu ppm	Pb ppm	Mo ppm
K843615	5922805	620748	1308	Outcrop	2.16	0.085	3960	4.4	11.2
K843658	5923301	620643	1421	Float	1.3	0.035	2520	10.4	3.51
K843659	5923305	620640	1424	Float	11.8	0.082	26000	129.5	8.17
K843661	5923250	620663	1408	Float	14.3	0.142	24900	5.6	2.4
K843662	5923016	620464	1339	Outcrop	0.81	0.539	389	28.8	12.05
K843663	5922816	620753	1307	Float	0.08	0.008	12	3.3	4.42
K843664	5922808	620752	1234	Outcrop	1.86	0.061	18400	8.5	1.82
K843665	5922823	620860	1212	Outcrop	1.3	0.08	12000	10.7	3.5
K843666	5922810	620913	1219	Outcrop	1.68	0.032	3120	47.4	8.28
K843667	5922825	621010	1212	Outcrop	0.16	0.013	335	12.3	5.65
K843706	5923123	620507	1364	Outcrop	6.06	0.321	13300	16.9	26.9
K843708	5923102	620492	1366	Float	5.41	0.009	5100	87.4	1.09
K843709	5922858	620945	1224	Outcrop	2.6	0.052	8630	2460	3.75

Sources

<https://imperialmetals.com/our-operations/huckleberry-mine/overview>
<https://surgecopper.com/projects/berg-project/>
<https://surgecopper.com/projects/ootsa-project/resources/>
<https://voltcarbontech.com/redbird-property/#:~:text=The%20Red%20Bird%20Property%20represents,these%20tenures%20in%20good%20standing>
<https://minfile.gov.bc.ca/summary.aspx?minfilno=093E%20%20055>
<https://firsttellurium.com/deer-horn-te-ag-au/>

Why Sable?

- 1 Focus on large Cu-Au-Mo porphyry targets
- 2 Pipeline of multiple high-quality targets
- 3 Drilling at least two targets per year
- 4 Access to >CAD\$12.5M cash to continue systematic exploration approach



Exploring for Elephants in Elephant Country

Known porphyry systems along to Miocene mineral belts where Sable is exploring

- ◆ **Pelambres** - 44 MtCu @ ~ 0.55% Cu
- ◆ **El Pachon** - 1.5 Bton, 0.55% Cu = **8.2 Mt Cu**
- ◆ **Jose Maria** – 1 Bton, 0.3% Cu, 0.22 Au = **4.4Mt Cu Eq @ .44% CuEq**
- ◆ **Helados** - 2.8. Bton, 0.35% Cu, 0.139 Au = **13 Mt Cu Eq @ .44% CuEq**
- ◆ **Cerro Casale** - 1.2 Bton @ 0.22% Cu and 0.59 g/t Au = **7 Mt Cu Eq @ 0.6% CuEq**
- ◆ **Filo del Sol** - 259 Mton, 0.39% Cu, 0.312 Au = **1.5Mt Cu Eq @ .59% CuEq**
- ◆ **Los Azules** - 2.6 Bton, 0.33% Cu = **8.6 Mt Cu**

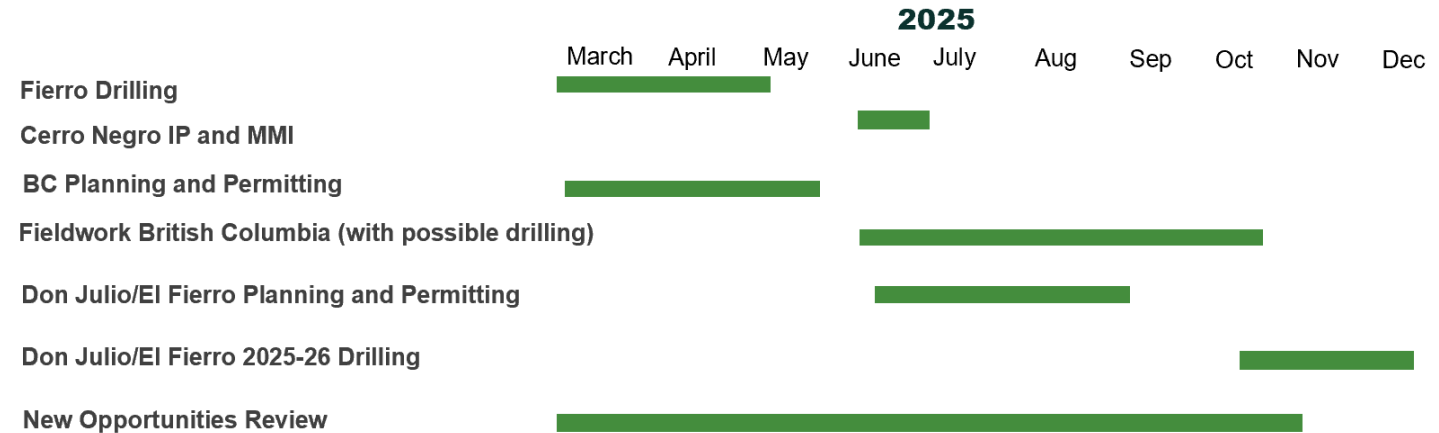
Note: Deposits ranging from 4.4 to 44 Mt CuEq

Goals Q2/Q3/Q4 2025

- 1 Waiting for results from El Fierro, analysis, and discussion with Moxico. Next season planning
- 2 Interpretation of drilling results from Don Julio and planning of the next drill season
- 3 IP surveys and MMI sampling at Cerro Negro funded by Moxico Resources
- 4 Planning of field season in British Columbia. Mapping, prospection, and geophysics at Copper Queen, Copper Prince, and Core Mountain
- 5 Evaluation of additional opportunities for advanced projects in suitable jurisdictions

Tentative Work Plan

March 2025 – December 2025

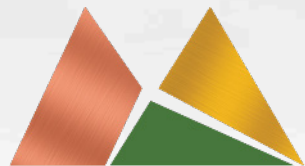


Exploration Budget

March 2025 – December 2025

- **Cerro Negro C\$699K** (Funded by Moxico)
- **BC Canada: C\$824K**
- **El Fierro: C\$ 1.8M** (Funded by Moxico)
- **El Fierro/Don Julio next drilling: TBD**

Note: Drill plans and budgets for Don Julio and El Fierro are prepared and approved during the South American winter season, after a detailed analysis of the data generated during the previous summer drill season.



SABLE
RESOURCES

THANK YOU

• TSXV **SAE**